

## Anti-VAMP 1 antibody (2-35) (STJ13100326)

STJ13100326

### GENERAL INFORMATION

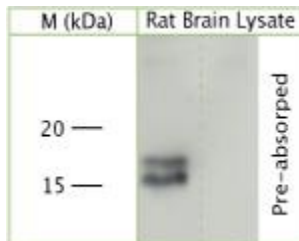
<b>Product Type</b>	Primary antibodies
<b>Short Description</b>	Nz White Rabbit polyclonal antibody anti-VAMP 1 (2-35) is suitable for use in Immunohistochemistry and Western Blot research applications.
<b>Applications</b>	IHC, WB
<b>Host/Source</b>	NZ White Rabbit
<b>Reactivity</b>	Rat, Mouse

### PRODUCT PROPERTIES

<b>Clonality</b>	Polyclonal
<b>Clone ID</b>	
<b>Concentration</b>	
<b>Conjugation</b>	Unconjugated
<b>Purification</b>	Whole serum
<b>Dilution Range</b>	A dilution of 1:300 to 1:2000 is recommended. The optimal dilution should be determined by the end user.
<b>Formulation</b>	Shipped as lyophilised. Reconstitute in 100 µl of sterile water. Centrifuge to remove any insoluble material.
<b>Isotype</b>	IgG
<b>Storage</b>	Maintain the lyophilised/reconstituted antibodies frozen at -20°C for long term storage and refrigerated at 2-8°C for a shorter term.
<b>Instruction</b>	When reconstituting, glycerol (1:1) may be added for an additional stability. Avoid freeze and thaw cycles.

### TARGET INFORMATION

<b>Gene ID</b>	22317
<b>Gene Symbol</b>	Vamp1
<b>Uniprot ID</b>	VAMP1_MOUSE
<b>Immunogen</b>	A synthetic peptide from aa region 2-35 of mouse VAMP-1 conjugated to an immunogenic carrier protein was used as the antigen.
<b>Immunogen Region</b>	2-35
<b>Specificity</b>	Specific for VAMP1.
<b>Immunogen Sequence</b>	



WB on rat brain lysate using Rabbit antibody to VAMP 1 (STJ13100326) at 1:1000 dilution. Pre-absorption of the antibody with the immunising peptide completely abolishes the detected bands.