

Anti-Sortilin antibody (ECD) (STJ13100315)

STJ13100315

GENERAL INFORMATION

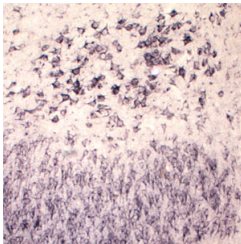
Product Type	Primary antibodies
Short Description	Nz White Rabbit polyclonal antibody anti-Sortilin (ECD) is suitable for use in Immunohistochemistry and Western Blot research applications.
Applications	IHC, WB
Host/Source	NZ White Rabbit
Reactivity	Rat, Mouse

PRODUCT PROPERTIES

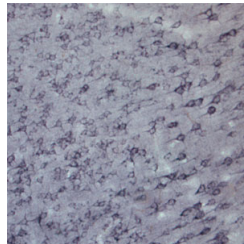
Clonality	Polyclonal
Clone ID	
Concentration	
Conjugation	Unconjugated
Purification	Whole serum
Dilution Range	A dilution of 1:1000 to 1:2000 is recommended. The optimal dilution should be determined by the end user. Not yet tested in other applications.
Formulation	Shipped as lyophilised. Reconstitute in 100 µl of sterile water. Centrifuge to remove any insoluble material.
Isotype	IgG
Storage	Maintain the lyophilised/reconstituted antibodies frozen at -20°C for long term storage and refrigerated at 2-8°C for a shorter term.
Instruction	When reconstituting, glycerol (1:1) may be added for an additional stability. Avoid freeze and thaw cycles.

TARGET INFORMATION

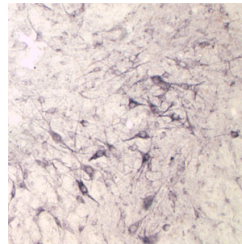
Gene ID	20661
Gene Symbol	Sort1
Uniprot ID	SORT_MOUSE
Immunogen	A synthetic peptide from the extracellular domain of rat Sortilin conjugated to blue carrier protein was used as the antigen.
Immunogen Region	ECD
Specificity	Specific for Sortilin.
Immunogen Sequence	



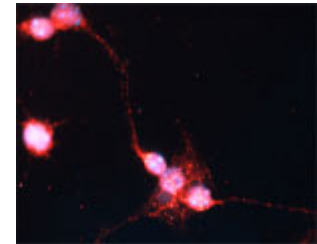
IHC on rat brain using Rabbit antibody to Sortilin (STJ13100315) at 1:1000 dilution. Pre-absorption of the antibody with the immunising peptide completely abolishes the immunostaining (not shown).



IHC on rat brain using Rabbit antibody to Sortilin (STJ13100315) at 1:1000 dilution. Pre-absorption of the antibody with the immunising peptide completely abolishes the immunostaining (not shown).



IHC on rat spinal cord (ventral horn) using Rabbit antibody to Sortilin (STJ13100315) at 1:1000 dilution. Pre-absorption of the antibody with the immunising peptide completely abolishes the immunostaining (not shown).



IF on 1 day-old mouse cortical cell culture using Rabbit antibody to Sortilin (STJ13100315) at 1:2000 dilution. DAPI counter stained.

This product is suitable for in-vitro studies under the RESEARCH USE ONLY [RUO] licence. This product must not be used as for diagnostic or other medical purposes.
St John's Laboratory Ltd, Knowledge Dock Business Centre, University Way, London, E16 2RD | Tel: 0208 223 3081