

## Anti-RAB3A antibody (2-50) (STJ13100307)

STJ13100307

### GENERAL INFORMATION

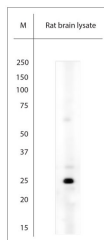
<b>Product Type</b>	Primary antibodies
<b>Short Description</b>	Nz White Rabbit polyclonal antibody anti-RAB3A (2-50) is suitable for use in Immunohistochemistry and Western Blot research applications.
<b>Applications</b>	IHC, WB
<b>Host/Source</b>	NZ White Rabbit
<b>Reactivity</b>	Human, Mouse, Rat

### PRODUCT PROPERTIES

<b>Clonality</b>	Polyclonal
<b>Clone ID</b>	
<b>Concentration</b>	
<b>Conjugation</b>	Unconjugated
<b>Purification</b>	Whole serum
<b>Dilution Range</b>	Use at a dilution of 1:4000 to 1:5000. The optimal dilution should be determined by the end user. Not yet tested in other applications.
<b>Formulation</b>	Shipped as lyophilised. Reconstitute in 100 µl of sterile water. Centrifuge to remove any insoluble material.
<b>Isotype</b>	IgG
<b>Storage</b>	Maintain the lyophilised/reconstituted antibodies frozen at -20°C for long term storage and refrigerated at 2-8°C for a shorter term.
<b>Instruction</b>	When reconstituting, glycerol (1:1) may be added for an additional stability. Avoid freeze and thaw cycles.

### TARGET INFORMATION

<b>Gene ID</b>	5864
<b>Gene Symbol</b>	RAB3A
<b>Uniprot ID</b>	RAB3A_HUMAN
<b>Immunogen</b>	A synthetic peptide from aa region 2-50 of mouse RAB3A conjugated to blue carrier protein has been used as the antigen. The antigen is homologous for RAB3B, C, D in human and rat.
<b>Immunogen Region</b>	2-50
<b>Specificity</b>	Specific for RAB3.
<b>Immunogen Sequence</b>	



WB on rat brain lysate. Blocking with 1% LFDM for 30 min at RT. Primary antibody used at 1:4000 dilution incubated overnight at 4C.