

Anti-RGS19 antibody (STJ13100295)

STJ13100295

GENERAL INFORMATION

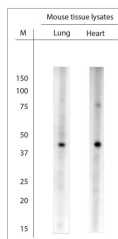
Product Type	Primary antibodies
Short Description	Nz White Rabbit polyclonal antibody anti-RGS19 is suitable for use in Immunohistochemistry and Western Blot research applications.
Applications	IHC, WB
Host/Source	NZ White Rabbit
Reactivity	Human, Rat, Mouse

PRODUCT PROPERTIES

Clonality	Polyclonal
Clone ID	
Concentration	
Conjugation	Unconjugated
Purification	Whole serum
Dilution Range	Use at a dilution of 1:1000 to 1:3000. The optimal dilution should be determined by the end user.
Formulation	Shipped as lyophilised. Reconstitute in 150 µl of sterile water. Centrifuge to remove any insoluble material.
Isotype	IgG
Storage	Maintain the lyophilised/reconstituted antibodies frozen at -20°C for long term storage and refrigerated at 2-8°C for a shorter term.
Instruction	When reconstituting, glycerol (1:1) may be added for an additional stability. Avoid freeze and thaw cycles.

TARGET INFORMATION

Gene ID	10287
Gene Symbol	RGS19
Uniprot ID	RGS19_HUMAN
Immunogen	A synthetic peptide from human RGS19 conjugated to blue carrier protein has been used as the antigen. The peptide is homologous in rat and mouse.
Immunogen Region	
Specificity	Specific for RGS19.
Immunogen Sequence	



WB on mouse tissue lysates. Blocking with 0.5% LFDm for 30 min at RT; Primary antibody used at 1: 3000 dilution incubated overnight at 4C.