

## Anti-RSSA antibody (50-100) (STJ13100273)

STJ13100273

### GENERAL INFORMATION

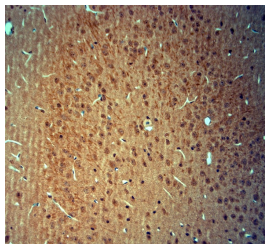
<b>Product Type</b>	Primary antibodies
<b>Short Description</b>	Nz White Rabbit polyclonal antibody anti-Colon carcinoma laminin binding protein (50-100) is suitable for use in Immunohistochemistry and Western Blot research applications.
<b>Applications</b>	IHC, WB
<b>Host/Source</b>	NZ White Rabbit
<b>Reactivity</b>	Rat, Mouse, Human

### PRODUCT PROPERTIES

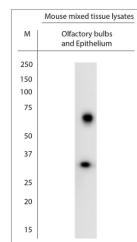
<b>Clonality</b>	Polyclonal
<b>Clone ID</b>	
<b>Concentration</b>	
<b>Conjugation</b>	Unconjugated
<b>Purification</b>	Whole serum
<b>Dilution Range</b>	A dilution of 1:3000 is recommended for WB and 1:1000 for OHC-P. The optimal dilution should be determined by the end user.
<b>Formulation</b>	Shipped as lyophilised. Reconstitute in 100 µl of sterile water. Centrifuge to remove any insoluble material.
<b>Isotype</b>	IgG
<b>Storage Instruction</b>	Maintain the lyophilised/reconstituted antibodies frozen at -20°C for long term storage and refrigerated at 2-8°C for a shorter term. When reconstituting, glycerol (1:1) may be added for an additional stability. Avoid freeze and thaw cycles.

### TARGET INFORMATION

<b>Gene ID</b>	3921
<b>Gene Symbol</b>	RPSA
<b>Uniprot ID</b>	RSSA_HUMAN
<b>Immunogen</b>	A synthetic peptide aa region 50-100 of human 40S ribosomal protein SA conjugated to blue carrier protein was used as the antigen. The peptide is homologous in rat and mouse.
<b>Immunogen Region</b>	50-100
<b>Specificity</b>	Specific for 40S ribosomal protein SA
<b>Immunogen Sequence</b>	



IHC-P on paraffin sections of mouse olfactory bulb. The animal was perfused using Autoperfusor at a pressure of 130 mmHg with 300 ml 4% FA before being processed for paraffin embedding. HIER: Tris-EDTA, pH 9 for 20 min using Thermo PT Module. Blocking: 0.2% LFDM in TBST filtered thru 0.2 µm. Detection was done using Novolink HRP polymer from Leica following manufacturer's instructions; DAB chromogen. Primary antibody dilution 1:1000. Incubated 30 min at RT using Autostainer. Sections were counterstained with Harris Hematoxylin.



WB on mouse tissue lysate. Blocking: 1% LFDM for 30 min at RT; primary antibody dilution 1:3000 incubated at 4°C overnight.

This product is suitable for in-vitro studies under the RESEARCH USE ONLY [RUO] licence. This product must not be used as for diagnostic or other medical purposes.

St John's Laboratory Ltd, Knowledge Dock Business Centre, University Way, London, E16 2RD | Tel: 0208 223 3081