

Anti-P2RX1 antibody (Cytoplasmic) (STJ13100217)

STJ13100217

GENERAL INFORMATION

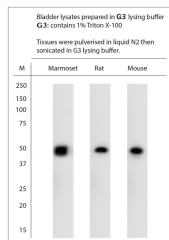
Product Type	Primary antibodies
Short Description	Nz White Rabbit polyclonal antibody anti-P2X1 (Cytoplasmic) is suitable for use in Immunohistochemistry and Western Blot research applications.
Applications	IHC, WB
Host/Source	NZ White Rabbit
Reactivity	Mouse, Human, Rat, Marmoset

PRODUCT PROPERTIES

Clonality	Polyclonal
Clone ID	
Concentration	
Conjugation	Unconjugated
Purification	Whole serum
Dilution Range	A dilution of 1:2000 is recommended. The optimal dilution should be determined by the end user. Not yet tested in other applications.
Formulation	Shipped as lyophilised. Reconstitute in 100 µl of sterile water. Centrifuge to remove any insoluble material.
Isotype	IgG
Storage Instruction	Maintain the lyophilised/reconstituted antibodies frozen at -20°C for long term storage and refrigerated at 2-8°C for a shorter term. When reconstituting, glycerol (1:1) may be added for an additional stability. Avoid freeze and thaw cycles.

TARGET INFORMATION

Gene ID	5023
Gene Symbol	P2RX1
Uniprot ID	P2RX1_HUMAN
Immunogen	A synthetic peptide from the cytoplasmic domain of human P2X1 conjugated to blue carrier protein was used as the antigen. The antigen shares 92% identity with rat and mouse sequence.
Immunogen Region	Cytoplasmic
Specificity	Specific for P2RX1.
Immunogen Sequence	



WB on bladder lysates. Blocking: 1% LFDPM for 30 min at RT; primary antibody dilution 1: 2000 incubated at 4C overnight.