

Anti-NMBR antibody (STJ13100204)

STJ13100204

GENERAL INFORMATION

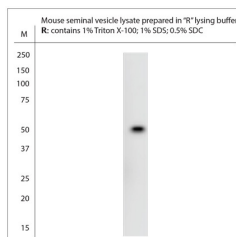
Product Type	Primary antibodies
Short Description	Nz White Rabbit polyclonal antibody anti-NMBR is suitable for use in Immunohistochemistry research applications.
Applications	IHC
Host/Source	NZ White Rabbit
Reactivity	Rat, Mouse, Human, Marmoset

PRODUCT PROPERTIES

Clonality	Polyclonal
Clone ID	
Concentration	
Conjugation	Unconjugated
Purification	Whole serum
Dilution Range	Dilution of 1:500 is recommended. The optimal dilution should be determined by the end user. Not yet tested in other applications.
Formulation	Shipped as lyophilised. Reconstitute in 100 µl of sterile water. Centrifuge to remove any insoluble material.
Isotype	IgG
Storage	Maintain the lyophilised/reconstituted antibodies frozen at -20°C for long term storage and refrigerated at 2-8°C for a shorter term.
Instruction	When reconstituting, glycerol (1:1) may be added for an additional stability. Avoid freeze and thaw cycles.

TARGET INFORMATION

Gene ID	4829
Gene Symbol	NMBR
Uniprot ID	NMBR_HUMAN
Immunogen	A synthetic peptide from mouse NMBR conjugated to blue carrier protein was used as the antigen. The peptide is homologous in rat and human and marmoset.
Immunogen Region	
Specificity	Specific for NMBR.
Immunogen Sequence	



WB on mouse tissue lysate. Blocking: 1% LFDI for 30 min at RT, primary antibody dilution 1: 500 incubated overnight at 4C.