

Anti-ENO2 antibody (Internal) (STJ13100198)

STJ13100198

GENERAL INFORMATION

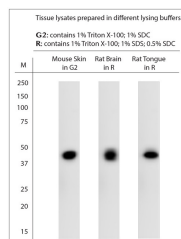
Product Type	Primary antibodies
Short Description	Nz White Rabbit polyclonal antibody anti-Enolase (Internal) is suitable for use in Western Blot research applications.
Applications	WB
Host/Source	NZ White Rabbit
Reactivity	Human, Rat, Mouse, Marmoset

PRODUCT PROPERTIES

Clonality	Polyclonal
Clone ID	
Concentration	
Conjugation	Unconjugated
Purification	Whole serum
Dilution Range	A dilution of 1:2000 to 1:6000 is recommended. The optimal dilution should be determined by the end user. Not yet tested in other applications.
Formulation	Shipped as lyophilised. Reconstitute in 100 µl of sterile water. Centrifuge to remove any insoluble material.
Isotype	IgG
Storage Instruction	Maintain the lyophilised/reconstituted antibodies frozen at -20°C for long term storage and refrigerated at 2-8°C for a shorter term. When reconstituting, glycerol (1:1) may be added for an additional stability. Avoid freeze and thaw cycles.

TARGET INFORMATION

Gene ID	2026
Gene Symbol	ENO2
Uniprot ID	ENOG_HUMAN
Immunogen	A synthetic peptide from internal region of human Enolase conjugated to blue carrier protein was used as the antigen. The peptide is homologous in rat and mouse.
Immunogen Region	Internal
Specificity	Specific for Enolase (alpha, beta, gamma).
Immunogen Sequence	



WB on tissue lysates. Blocking: 1% LFDM for 30 min at RT; primary antibody dilutions: 1: 1000 in Brain-R; 1: 1000 in Skin-G2; 1: 1000 in Tongue-R incubated overnight at 4C.