

Anti-RHOT1 antibody (50-100) (STJ13100187)

STJ13100187

GENERAL INFORMATION

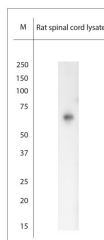
Product Type	Primary antibodies
Short Description	Nz White Rabbit polyclonal antibody anti-RHOT1 (50-100) is suitable for use in Immunohistochemistry and Western Blot research applications.
Applications	IHC, WB
Host/Source	NZ White Rabbit
Reactivity	Human, Mouse, Rat

PRODUCT PROPERTIES

Clonality	Polyclonal
Clone ID	
Concentration	
Conjugation	Unconjugated
Purification	Whole serum
Dilution Range	A dilution of 1:1000 to 1:2000 is recommended. The optimal dilution should be determined by the end user. Not yet tested in other applications.
Formulation	Shipped as lyophilised. Reconstitute in 100 µl of sterile water. Centrifuge to remove any insoluble material.
Isotype	IgG
Storage	Maintain the lyophilised/reconstituted antibodies frozen at -20°C for long term storage and refrigerated at 2-8°C for a shorter term.
Instruction	When reconstituting, glycerol (1:1) may be added for an additional stability. Avoid freeze and thaw cycles.

TARGET INFORMATION

Gene ID	55288
Gene Symbol	RHOT1
Uniprot ID	MIRO1_HUMAN
Immunogen	A synthetic peptide from aa region 50-100 of human RHOT1 conjugated to blue carrier protein was used as the antigen. The peptide is homologous in rat and mouse.
Immunogen Region	50-100
Specificity	Specific for RHOT1.
Immunogen Sequence	



WB on rat spinal cord lysate. Blocking with 0.5% LFDM for 30 min at RT. Primary antibody used at 1: 1000 dilution incubated overnight at 4°C.