

Anti-KCNJ12 antibody (Cytoplasmic) (STJ13100158)

STJ13100158

GENERAL INFORMATION

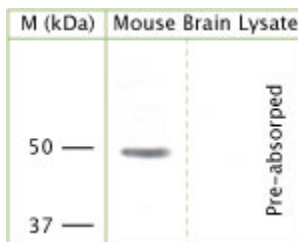
Product Type	Primary antibodies
Short Description	Nz White Rabbit polyclonal antibody anti-KCNJ12 (Cytoplasmic) is suitable for use in Immunohistochemistry and Western Blot research applications.
Applications	IHC, WB
Host/Source	NZ White Rabbit
Reactivity	Rat, Mouse

PRODUCT PROPERTIES

Clonality	Polyclonal
Clone ID	
Concentration	
Conjugation	Unconjugated
Purification	Whole serum
Dilution Range	A dilution of 1:300 to 1:2000 is recommended. The optimal dilution should be determined by the end user. Not yet tested in other applications.
Formulation	Shipped as lyophilised. Reconstitute in 100 µl of sterile water. Centrifuge to remove any insoluble material.
Isotype	IgG
Storage	Maintain the lyophilised/reconstituted antibodies frozen at -20°C for long term storage and refrigerated at 2-8°C for a shorter term.
Instruction	When reconstituting, glycerol (1:1) may be added for an additional stability. Avoid freeze and thaw cycles.

TARGET INFORMATION

Gene ID	16515
Gene Symbol	Kcnj12
Uniprot ID	KCJ12_MOUSE
Immunogen	A synthetic peptide from the cytoplasmic domain of rat KCNJ12 (KCNJN1, Kir2.2, IRK2) conjugated to an immunogenic carrier protein was used as the antigen. The peptide is homologous in mouse.
Immunogen Region	Cytoplasmic
Specificity	Specific for KCNJ12.
Immunogen Sequence	



Rabbit antibody to KCNJ12 (STJ13100158) at 1:1000 dilution; blocked with 1% LFDm for 15 minutes at room temperature with shake; primary antibody incubated for 15 minutes at room temperature, washed 3 times with PBST, 5 minutes each. Secondary antibody was also incubated for 15 minutes at room temperature.