

## Anti-GABRA1 antibody (390-450) (STJ13100147)

STJ13100147

### GENERAL INFORMATION

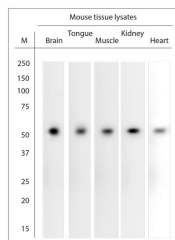
|                          |   |
|--------------------------|---|
| <b>Product Type</b>      | Primary antibodies  |
| <b>Short Description</b> | Nz White Rabbit polyclonal antibody anti-GABRA1 (390-450) is suitable for use in Immunohistochemistry and Western Blot research applications. |
| <b>Applications</b>      | IHC, WB   |
| <b>Host/Source</b>       | NZ White Rabbit   |
| <b>Reactivity</b>        | Human, Mouse, Rat   |

### PRODUCT PROPERTIES

|                       |   |
|-----------------------|---|
| <b>Clonality</b>      | Polyclonal  |
| <b>Clone ID</b>       |   |
| <b>Concentration</b>  |   |
| <b>Conjugation</b>    | Unconjugated  |
| <b>Purification</b>   | Whole serum   |
| <b>Dilution Range</b> | A dilution of 1:2000 to 1:3000 is recommended. The optimal dilution should be determined by the end user. Not yet tested in other applications. |
| <b>Formulation</b>    | Shipped as lyophilised. Reconstitute in 100 µl of sterile water. Centrifuge to remove any insoluble material.                                   |
| <b>Isotype</b>        | IgG   |
| <b>Storage</b>        | Maintain the lyophilised/reconstituted antibodies frozen at -20°C for long term storage and refrigerated at 2-8°C for a shorter term.           |
| <b>Instruction</b>    | When reconstituting, glycerol (1:1) may be added for an additional stability. Avoid freeze and thaw cycles.                                     |

### TARGET INFORMATION

|                           |  |
|---------------------------|--|
| <b>Gene ID</b>            | 2554   |
| <b>Gene Symbol</b>        | GABRA1   |
| <b>Uniprot ID</b>         | GBRA1_HUMAN  |
| <b>Immunogen</b>          | A synthetic peptide from aa region 390-450 of human GABRA1 conjugated to blue carrier protein was used as the antigen. The peptide is homologous in rat and mouse. |
| <b>Immunogen Region</b>   | 390-450  |
| <b>Specificity</b>        | Specific for GABA (A) receptor subunit alpha-1.  |
| <b>Immunogen Sequence</b> |  |



WB on mouse tissue lysates. Blocking: 1% LFDMM for 30 min at RT; primary antibody dilution 1: 2000 incubated at 4°C overnight.