

## Anti-GAPDH antibody (C-Term) (STJ13100141)

STJ13100141

### GENERAL INFORMATION

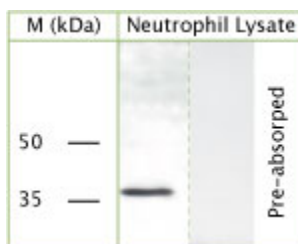
<b>Product Type</b>	Primary antibodies
<b>Short Description</b>	Sheep polyclonal antibody anti-GAPDH (C-Term) is suitable for use in Immunohistochemistry and Western Blot research applications.
<b>Applications</b>	IHC, WB
<b>Host/Source</b>	Sheep
<b>Reactivity</b>	Rat, Mouse, Human

### PRODUCT PROPERTIES

<b>Clonality</b>	Polyclonal
<b>Clone ID</b>	
<b>Concentration</b>	
<b>Conjugation</b>	Unconjugated
<b>Purification</b>	IgG
<b>Dilution Range</b>	A concentration of 10-50 µg/ml is recommended. The optimal concentration should be determined by the end user. Not yet tested in other applications.
<b>Formulation</b>	Shipped as lyophilised. Reconstitute in 500 µl of sterile water. Centrifuge to remove any insoluble material.
<b>Isotype</b>	
<b>Storage</b>	Maintain the lyophilised/reconstituted antibodies frozen at -20°C for long term storage and refrigerated at 2-8°C for a shorter term.
<b>Instruction</b>	When reconstituting, glycerol (1:1) may be added for an additional stability. Avoid freeze and thaw cycles.

### TARGET INFORMATION

<b>Gene ID</b>	<a href="#">2597</a>
<b>Gene Symbol</b>	<a href="#">GAPDH</a>
<b>Uniprot ID</b>	<a href="#">G3P_HUMAN</a>
<b>Immunogen</b>	A synthetic peptide from c-terminal of rat GAPDH conjugated to blue carrier protein was used as the antigen. The antigen is homologous in mouse and shares 90% identity with human sequence.
<b>Immunogen Region</b>	C-Term
<b>Specificity</b>	Specific for GAPDH.
<b>Immunogen Sequence</b>	



WB on human neutrophil lysate using Sheep antibody to c-terminal of GAPDH (STJ13100141) at a concentration of 20 µg/ml.

This product is suitable for in-vitro studies under the RESEARCH USE ONLY [RUO] licence. This product must not be used as for diagnostic or other medical purposes.  
St John's Laboratory Ltd, Knowledge Dock Business Centre, University Way, London, E16 2RD | Tel: 0208 223 3081