

## Anti-PSD95 antibody (N-Term) (STJ13100116)

STJ13100116

### GENERAL INFORMATION

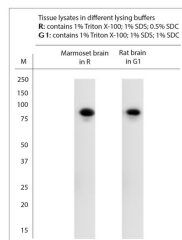
<b>Product Type</b>	Primary antibodies
<b>Short Description</b>	Nz White Rabbit polyclonal antibody anti-PSD95 (N-Term) is suitable for use in Immunohistochemistry and Western Blot research applications.
<b>Applications</b>	IHC, WB
<b>Host/Source</b>	NZ White Rabbit
<b>Reactivity</b>	Human, Marmoset, Rat, Mouse

### PRODUCT PROPERTIES

<b>Clonality</b>	Polyclonal
<b>Clone ID</b>	
<b>Concentration</b>	
<b>Conjugation</b>	Unconjugated
<b>Purification</b>	Whole serum
<b>Dilution Range</b>	A dilution of 1:1000 to 1:2000 is recommended. The optimal dilution should be determined by the end user. Not yet tested in other applications.
<b>Formulation</b>	Shipped as lyophilised. Reconstitute in 100 ul of sterile water. Centrifuge to remove any insoluble material.
<b>Isotype</b>	IgG
<b>Storage Instruction</b>	Maintain the lyophilised/reconstituted antibodies frozen at -20C for long term storage and refrigerated at 2-8C for a shorter term. When reconstituting, glycerol (1:1) may be added for an additional stability. Avoid freeze and thaw cycles.

### TARGET INFORMATION

<b>Gene ID</b>	<a href="#">1742</a>
<b>Gene Symbol</b>	<a href="#">DLG4</a>
<b>Uniprot ID</b>	<a href="#">DLG4_HUMAN</a>
<b>Immunogen</b>	A synthetic peptide from n-terminal region of human PSD95 conjugated to blue carrier protein was used as the antigen. The peptide is homologous in rat and mouse.
<b>Immunogen Region</b>	N-Term
<b>Specificity</b>	Specific for PSD95.
<b>Immunogen Sequence</b>	



WB on brain lysates prepared in different lysing buffers.  
 Blocking: 1% LFDm for 30 min at RT; primary antibody dilution 1:2000 incubated at 4C overnight.