

Anti-CXCR2 antibody (2-50) (STJ13100105)

STJ13100105

GENERAL INFORMATION

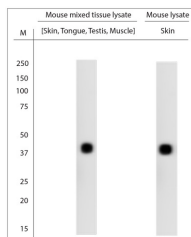
Product Type	Primary antibodies
Short Description	Nz White Rabbit polyclonal antibody anti-CXCR2 (2-50) is suitable for use in Immunohistochemistry and Western Blot research applications.
Applications	IHC, WB
Host/Source	NZ White Rabbit
Reactivity	Mouse

PRODUCT PROPERTIES

Clonality	Polyclonal
Clone ID	
Concentration	
Conjugation	Unconjugated
Purification	Whole serum
Dilution Range	A dilution of 1:3000 is recommended for WB and 1:1000 for IHC-P. The optimal dilution should be determined by the end user.
Formulation	Shipped as lyophilised. Reconstitute in 100 µl of sterile water. Centrifuge to remove any insoluble material.
Isotype	IgG
Storage	Maintain the lyophilised/reconstituted antibodies frozen at -20°C for long term storage and refrigerated at 2-8°C for a shorter term.
Instruction	When reconstituting, glycerol (1:1) may be added for an additional stability. Avoid freeze and thaw cycles.

TARGET INFORMATION

Gene ID	12765
Gene Symbol	Cxcr2
Uniprot ID	CXCR2_MOUSE
Immunogen	A synthetic peptide from aa region 2-50 mouse CXCR2 conjugated to blue carrier protein was used as the antigen.
Immunogen Region	2-50
Specificity	Specific for CXCR2.
Immunogen Sequence	



WB on mouse tissue lysates. Blocking: 1% LFDM for 30 min at RT; primary antibody dilution 1: 3000 incubated at 4°C overnight.