

Anti-CAT antibody (STJ13100094)

STJ13100094

GENERAL INFORMATION

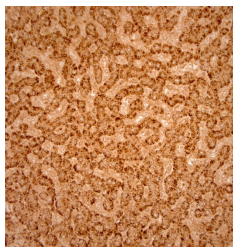
Product Type	Primary antibodies
Short Description	Nz White Rabbit polyclonal antibody anti-Catalase is suitable for use in Immunohistochemistry and Western Blot research applications.
Applications	IHC, WB
Host/Source	NZ White Rabbit
Reactivity	Mouse, Rat, Human, Xenopus, Zebrafish

PRODUCT PROPERTIES

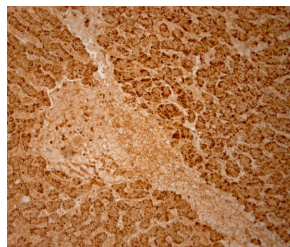
Clonality	Polyclonal
Clone ID	
Concentration	
Conjugation	Unconjugated
Purification	Whole serum
Dilution Range	A dilution of 1:2000 is recommended for IHC-P and 1:7000 for WB. The optimal dilution should be determined by the end user. Not yet tested in other applications.
Formulation	Shipped as lyophilised. Reconstitute in 100 µl of sterile water. Centrifuge to remove any insoluble material.
Isotype	IgG
Storage	Maintain the lyophilised/reconstituted antibodies frozen at -20°C for long term storage and refrigerated at 2-8°C for a shorter term.
Instruction	When reconstituting, glycerol (1:1) may be added for an additional stability. Avoid freeze and thaw cycles.

TARGET INFORMATION

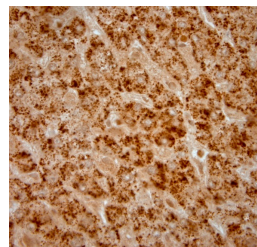
Gene ID	847
Gene Symbol	CAT
Uniprot ID	CATA_HUMAN
Immunogen	A synthetic peptide from mouse Catalase conjugated to blue carrier protein was used as the antigen. The antigen is homologous in many other species including rat, human, marmoset, zebrafish, xenopus and guinea pig.
Immunogen Region	
Specificity	Specific for Catalase.
Immunogen Sequence	



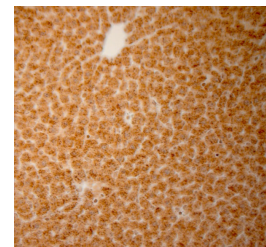
IHC-P on paraffin sections of human liver. HIER: Tris-EDTA, pH 9 for 20 min using Thermo PT Module. Blocking: 0.2% LFD in TBST filtered thru 0.2 µm. Detection was done using Novolink HRP polymer from Leica following manufacturer's instructions; DAB chromogen. Primary antibody dilution 1: 2000, incubated 30 min at RT using Autostainer. Sections were counterstained with Harris Hematoxylin.



IHC-P on paraffin sections of human liver. HIER: Tris-EDTA, pH 9 for 20 min using Thermo PT Module. Blocking: 0.2% LFD in TBST filtered thru 0.2 µm. Detection was done using Novolink HRP polymer from Leica following manufacturer's instructions; DAB chromogen. Primary antibody dilution 1: 2000, incubated 30 min at RT using Autostainer. Sections were counterstained with Harris Hematoxylin.



IHC-P on paraffin sections of human liver. HIER: Tris-EDTA, pH 9 for 20 min using Thermo PT Module. Blocking: 0.2% LFD in TBST filtered thru 0.2 µm. Detection was done using Novolink HRP polymer from Leica following manufacturer's instructions; DAB chromogen. Primary antibody dilution 1: 2000, incubated 30 min at RT using Autostainer. Sections were counterstained with Harris Hematoxylin.



IHC-P on paraffin sections of rat liver. The animal was perfused using Autoperfusor at a pressure of 110 mmHg with 300 ml 4% FA and further post fixed overnight before being processed for paraffin embedding. HIER: Tris-EDTA, pH 9 for 20 min using Thermo PT Module. Blocking: 0.2% LFD in TBST filtered thru 0.2 µm. Detection was done using Novolink HRP polymer from Leica following manufacturer's instructions; DAB chromogen. Primary antibody dilution 1:2000, incubated 30 min at RT using Autostainer. Sections were counterstained with Harris Hematoxylin.

This product is suitable for in-vitro studies under the RESEARCH USE ONLY [RUO] licence. This product must not be used as for diagnostic or other medical purposes.

St John's Laboratory Ltd, Knowledge Dock Business Centre, University Way, London, E16 2RD | Tel: 0208 223 3081