

## Anti-CAMP antibody (STJ13100093)

STJ13100093

### GENERAL INFORMATION

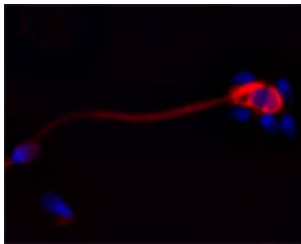
<b>Product Type</b>	Primary antibodies
<b>Short Description</b>	Mouse monoclonal antibody anti-Cathelicidin is suitable for use in Immunohistochemistry, Immunofluorescence, Western Blot and Flow Cytometry research applications.
<b>Applications</b>	IHC, IF, WB, FC
<b>Host/Source</b>	Mouse
<b>Reactivity</b>	Human

### PRODUCT PROPERTIES

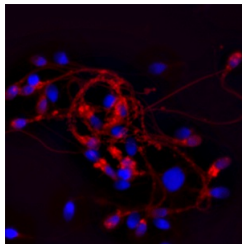
<b>Clonality</b>	Monoclonal
<b>Clone ID</b>	
<b>Concentration</b>	
<b>Conjugation</b>	Unconjugated
<b>Purification</b>	IgG
<b>Dilution Range</b>	Use at a concentration of 5-10 µg/ml. The optimal concentration should be determined by the end user. Not yet tested in other applications.
<b>Formulation</b>	Shipped as lyophilised. Reconstitute in 100 µl of sterile water. Centrifuge to remove any insoluble material.
<b>Isotype</b>	
<b>Storage Instruction</b>	Maintain the lyophilised/reconstituted antibodies frozen at -20°C for long term storage and refrigerated at 2-8°C for a shorter term. When reconstituting, glycerol (1:1) may be added for an additional stability. Avoid freeze and thaw cycles.

### TARGET INFORMATION

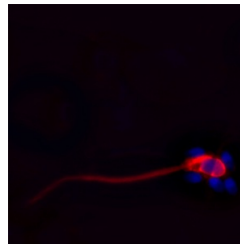
<b>Gene ID</b>	820
<b>Gene Symbol</b>	CAMP
<b>Uniprot ID</b>	CAMP_HUMAN
<b>Immunogen</b>	A synthetic peptide from human Cathelicidin antimicrobial peptide (LL-37) conjugated to an immunogenic carrier protein has been used as the antigen.
<b>Immunogen Region</b>	
<b>Specificity</b>	Specific for Cathelicidin antimicrobial peptide.
<b>Immunogen Sequence</b>	



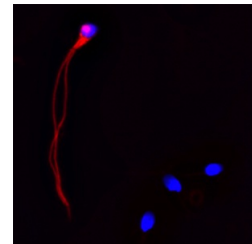
IF on ethanol-fixed human spermatozoid using Mouse monoclonal to Cathelicidin: OSX12 clone (STJ13100093) at a concentration of 10 µg/ml. DAPI counterstained appearing in blue.



IF on ethanol-fixed human spermatozoid using Mouse monoclonal to Cathelicidin: OSX12 clone (STJ13100093) at a concentration of 10 µg/ml. DAPI counterstained appearing in blue.



IF on ethanol-fixed human spermatozoid using Mouse monoclonal to Cathelicidin: OSX12 clone (STJ13100093) at a concentration of 10 µg/ml. DAPI counterstained appearing in blue.



IF on ethanol-fixed human spermatozoid using Mouse monoclonal to Cathelicidin: OSX12 clone (STJ13100093) at a concentration of 10 µg/ml. DAPI counterstained appearing in blue.

This product is suitable for in-vitro studies under the RESEARCH USE ONLY [RUO] licence. This product must not be used as for diagnostic or other medical purposes.  
 St John's Laboratory Ltd, Knowledge Dock Business Centre, University Way, London, E16 2RD | Tel: 0208 223 3081