

Anti-CAV1 antibody (30-80) (STJ13100076)

STJ13100076

GENERAL INFORMATION

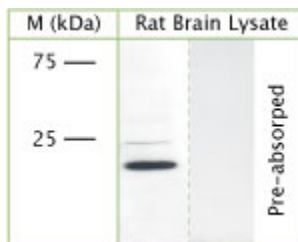
Product Type	Primary antibodies
Short Description	Nz White Rabbit polyclonal antibody anti-CAV1 (30-80) is suitable for use in Immunohistochemistry and Western Blot research applications.
Applications	IHC, WB
Host/Source	NZ White Rabbit
Reactivity	Mouse, Rat, Human

PRODUCT PROPERTIES

Clonality	Polyclonal
Clone ID	
Concentration	
Conjugation	Unconjugated
Purification	Whole serum
Dilution Range	A dilution of 1:300 to 1:2000 is recommended. The optimal dilution should be determined by the end user. Not tested in other applications.
Formulation	Shipped as lyophilised. Reconstitute in 150 µl of sterile water. Centrifuge to remove any insoluble material.
Isotype	IgG
Storage	Maintain the lyophilised/reconstituted antibodies frozen at -20°C for long term storage and refrigerated at 2-8°C for a shorter term.
Instruction	When reconstituting, glycerol (1:1) may be added for an additional stability. Avoid freeze and thaw cycles.

TARGET INFORMATION

Gene ID	857
Gene Symbol	CAV1
Uniprot ID	CAV1_HUMAN
Immunogen	A synthetic peptide from aa region 30-80 of human Caveolin 1 conjugated to blue carrier protein was used as the antigen. The antigen is homologous in many other species including rat, mouse.
Immunogen Region	30-80
Specificity	Specific for Caveolin-1.
Immunogen Sequence	



WB on rat brain lysate using Rabbit antibody to CAV1 (STJ13100076) at 1:1000 dilution. Pre-absorption of the antibody with the immunising peptide completely abolishes the detected band.

This product is suitable for in-vitro studies under the RESEARCH USE ONLY [RUO] licence. This product must not be used as for diagnostic or other medical purposes.
 St John's Laboratory Ltd, Knowledge Dock Business Centre, University Way, London, E16 2RD | Tel: 0208 223 3081