

Anti-CAMP antibody (STJ13100066)

STJ13100066

GENERAL INFORMATION

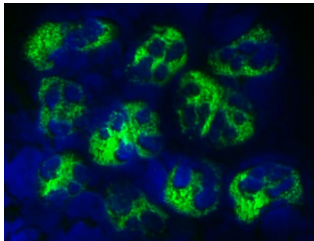
Product Type	Primary antibodies
Short Description	Nz White Rabbit polyclonal antibody anti-LL-37 is suitable for use in Immunohistochemistry and Western Blot research applications.
Applications	IHC, WB
Host/Source	NZ White Rabbit
Reactivity	Human

PRODUCT PROPERTIES

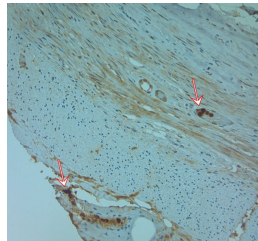
Clonality	Polyclonal
Clone ID	
Concentration	
Conjugation	Unconjugated
Purification	Whole serum
Dilution Range	Use at a dilution of 1:1000. The optimal dilution should be determined by the end user. Not yet tested in other applications.
Formulation	Shipped as lyophilised. Reconstitute in 150 µl of sterile water. Centrifuge to remove any insoluble material.
Isotype	IgG
Storage	Maintain the lyophilised/reconstituted antibodies frozen at -20°C for long term storage and refrigerated at 2-8°C for a shorter term.
Instruction	When reconstituting, glycerol (1:1) may be added for an additional stability. Avoid freeze and thaw cycles.

TARGET INFORMATION

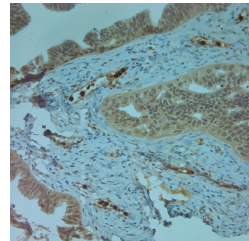
Gene ID	820
Gene Symbol	CAMP
Uniprot ID	CAMP_HUMAN
Immunogen	A synthetic peptide from human Cathelicidin conjugated to blue carrier protein has been used as the antigen.
Immunogen Region	
Specificity	Specific for Cathelicidin antimicrobial peptide.
Immunogen Sequence	



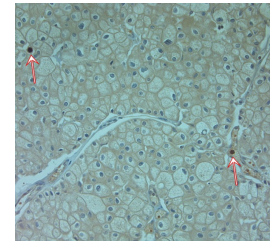
Staining of a cytospin preparation of peripheral blood mononuclear cells isolated from buffycoat. Cells were left to air dry and then fixed with cold acetone (90 seconds) and blocked with PBS containing 1% FCS and 0.1% saponin (blocking buffer) for 20 minutes. Cells were then washed twice in PBS and incubated with Rabbit antibody to LL-37 (STJ13100066), diluted 1:200 in blocking buffer, for 1 hour at room temperature. Cells were washed twice in PBS followed by incubation for 30 minutes with the FITC-labeled secondary antibody. Finally, cells were washed and nuclear counterstained with DAPI. The antibody selectively recognizes polymorphonuclear cells.



IHC on paraffin sections of human appendix tissue using Rabbit antibody to LL-37: STJ13100066. HIER: 1 mM EDTA, pH 8 for 20 min using Thermo PT Module. Blocking: 0.2% LFDm in TBST filtered thru 0.2 µm. Detection was done using Novolink HRP polymer from Leica following manufacturer's instructions. Primary antibody dilution 1: 1000, incubated 30 min at RT (using Autostainer) Sections were counterstained with Harris Hematoxylin.



IHC on paraffin sections of human fallopian tube tissue using Rabbit antibody to LL-37: STJ13100066. HIER: 1 mM EDTA, pH 8 for 20 min using Thermo PT Module. Blocking: 0.2% LFDm in TBST filtered thru 0.2 µm. Detection was done using Novolink HRP polymer from Leica following manufacturer's instructions. Primary antibody dilution 1: 1000, incubated 30 min at RT (using Autostainer) Sections were counterstained with Harris Hematoxylin.



IHC on paraffin sections of human kidney tissue using Rabbit antibody to LL-37: STJ13100066. HIER: 1 mM EDTA, pH 8 for 20 min using Thermo PT Module. Blocking: 0.2% LFDm in TBST filtered thru 0.2 µm. Detection was done using Novolink HRP polymer from Leica following manufacturer's instructions. Primary antibody dilution 1: 1000, incubated 30 min at RT (using Autostainer) Sections were counterstained with Harris Hematoxylin.

This product is suitable for in-vitro studies under the RESEARCH USE ONLY [RUO] licence. This product must not be used as for diagnostic or other medical purposes.

St John's Laboratory Ltd, Knowledge Dock Business Centre, University Way, London, E16 2RD | Tel: 0208 223 3081