

Anti-ABCG2 antibody (STJ13100035)

STJ13100035

GENERAL INFORMATION

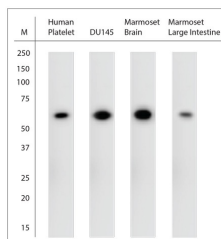
Product Type	Primary antibodies
Short Description	Nz White Rabbit polyclonal antibody anti-ABCG2 is suitable for use in Immunohistochemistry and Western Blot research applications.
Applications	IHC, WB
Host/Source	NZ White Rabbit
Reactivity	Human, Marmoset, Rat, Mouse

PRODUCT PROPERTIES

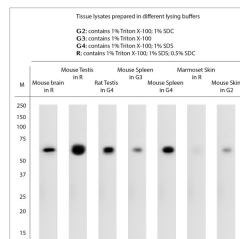
Clonality	Polyclonal
Clone ID	
Concentration	
Conjugation	Unconjugated
Purification	Whole serum
Dilution Range	A dilution of 1:1000 to 1:2000 is recommended. The optimal dilution should be determined by the end user. Not yet tested in other applications.
Formulation	Shipped as lyophilised. Reconstitute in 100 µl of sterile water. Centrifuge to remove any insoluble material.
Isotype	IgG
Storage Instruction	Maintain the lyophilised/reconstituted antibodies frozen at -20°C for long term storage and refrigerated at 2-8°C for a shorter term. When reconstituting, glycerol (1:1) may be added for an additional stability. Avoid freeze and thaw cycles.

TARGET INFORMATION

Gene ID	9429
Gene Symbol	ABCG2
Uniprot ID	ABCG2_HUMAN
Immunogen	A synthetic peptide from human ABCG1 conjugated to blue carrier protein was used as the antigen.
Immunogen Region	
Specificity	Specific for ABCG2.
Immunogen Sequence	



WB on tissues and cell line lysates. Blocking: 1% LFDm for 30 min at RT; primary antibody dilution 1:1000 incubated at 4°C overnight.



WB on tissue lysates prepared in different lysing buffers. Note the profound effect of the composition of the lysing buffers on WB. Blocking: 1% LFDm for 30 min at RT; primary antibody dilutions: 1:1000 in Spleen, Skin, Brain; 1:2000 in Testis incubated at 4°C overnight.