

Anti-ACTB antibody (C-Term) (STJ13100007)

STJ13100007

GENERAL INFORMATION

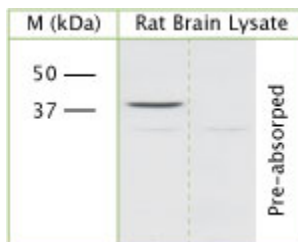
Product Type	Primary antibodies
Short Description	Nz White Rabbit polyclonal antibody anti-Actin (C-Term) is suitable for use in Immunohistochemistry and Western Blot research applications.
Applications	IHC, WB
Host/Source	NZ White Rabbit
Reactivity	Human, Rat, Mouse

PRODUCT PROPERTIES

Clonality	Polyclonal
Clone ID	
Concentration	
Conjugation	Unconjugated
Purification	Whole serum
Dilution Range	A dilution of 1:1000 to 1:2000 is recommended. The optimal dilution should be determined by the end user. Not yet tested in other applications.
Formulation	Shipped as lyophilised. Reconstitute in 100 µl of sterile water. Centrifuge to remove any insoluble material.
Isotype	IgG
Storage	Maintain the lyophilised/reconstituted antibodies frozen at -20°C for long term storage and refrigerated at 2-8°C for a shorter term.
Instruction	When reconstituting, glycerol (1:1) may be added for an additional stability. Avoid freeze and thaw cycles.

TARGET INFORMATION

Gene ID	60
Gene Symbol	ACTB
Uniprot ID	ACTB_HUMAN
Immunogen	A synthetic peptide from the c-terminal of human beta, gamma, kappa Actin (ACTB, ACTG, ACTK) conjugated to blue carrier protein was used as the antigen. The peptide is homologous in many species including rat, mouse, zebra fish and xenopus.
Immunogen Region	C-Term
Specificity	Specific for Actin.
Immunogen Sequence	



WB on rat brain lysate using Rabbit antibody to Actin (STJ13100007) at 1:1000 dilution. Pre-absorption of the antibody with the immunising peptide completely abolishes the detected band.