

Anti-ATP1A1 antibody (STJ13100005)

STJ13100005

GENERAL INFORMATION

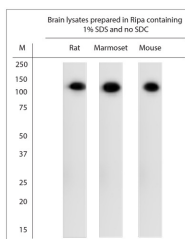
Product Type	Primary antibodies
Short Description	Nz White Rabbit polyclonal antibody anti-ATP1A1 is suitable for use in Immunohistochemistry and Western Blot research applications.
Applications	IHC, WB
Host/Source	NZ White Rabbit
Reactivity	Mouse, Rat, Human, Marmoset

PRODUCT PROPERTIES

Clonality	Polyclonal
Clone ID	
Concentration	
Conjugation	Unconjugated
Purification	Whole serum
Dilution Range	A dilution of 1:25000 is recommended for WB and 1:10000 for IHC-P. The optimal dilution should be determined by the end user. Not yet tested in other applications. Recommended tissue lysing buffer:Ripa, containing 1% SDS but no SDC.
Formulation	Shipped as lyophilised. Reconstitute in 100 µl of sterile water. Centrifuge to remove any insoluble material.
Isotype	IgG
Storage Instruction	Maintain the lyophilised/reconstituted antibodies frozen at -20°C for long term storage and refrigerated at 2-8°C for a shorter term. When reconstituting, glycerol (1:1) may be added for an additional stability. Avoid freeze and thaw cycles.

TARGET INFORMATION

Gene ID	476
Gene Symbol	ATP1A1
Uniprot ID	AT1A1_HUMAN
Immunogen	A synthetic peptide from mouse ATP1A1 conjugated to blue carrier protein was used as the antigen. The peptide is homologous in rat and human.
Immunogen Region	
Specificity	Specific for Na ⁺ /K ⁺ -ATPase alpha 1 subunit.
Immunogen Sequence	



WB on brain lysates. Blocking: 1% LFDM for 30 min at RT; primary antibody dilution 1: 25000 incubated at 4C overnight.