

Anti-ATG16L1 antibody (STJ13100004)

STJ13100004

GENERAL INFORMATION

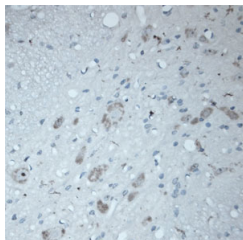
Product Type	Primary antibodies
Short Description	Nz White Rabbit polyclonal antibody anti-ATG16L1 is suitable for use in Immunohistochemistry and Western Blot research applications.
Applications	IHC, WB
Host/Source	NZ White Rabbit
Reactivity	Human

PRODUCT PROPERTIES

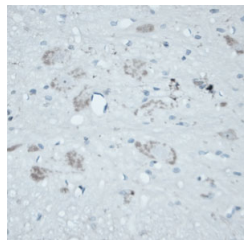
Clonality	Polyclonal
Clone ID	
Concentration	
Conjugation	Unconjugated
Purification	Whole serum
Dilution Range	Use at a dilution of 1:100 to 1:2000. The optimal dilution should be determined by the end user.
Formulation	Shipped as lyophilised. Reconstitute in 150 µl of sterile water. Centrifuge to remove any insoluble material.
Isotype	IgG
Storage Instruction	Maintain the lyophilised/reconstituted antibodies frozen at -20°C for long term storage and refrigerated at 2-8°C for a shorter term. When reconstituting, glycerol (1:1) may be added for an additional stability. Avoid freeze and thaw cycles.

TARGET INFORMATION

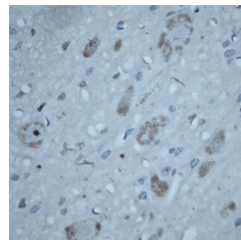
Gene ID	55054
Gene Symbol	ATG16L1
Uniprot ID	A16L1_HUMAN
Immunogen	A synthetic peptide from human ATG16L1 conjugated to blue carrier protein has been used as the antigen. The peptide is homologous in mouse and rat.
Immunogen Region	
Specificity	Specific for ATG16L1.
Immunogen Sequence	



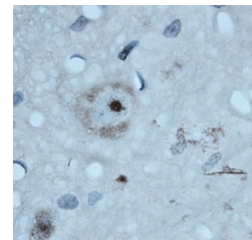
IHC on rat spinal cord (paraffin section) using Rabbit antibody to autophagy-related protein 16-1 (ATG16L1, APG16L) isoforms 1, 2, 3: whole serum (STJ13100004) at 1:200 dilution incubated overnight at 4C, developed with DAB/No and counterstained with hematoxylin.



IHC on rat spinal cord (paraffin section) using Rabbit antibody to autophagy-related protein 16-1 (ATG16L1, APG16L) isoforms 1, 2, 3: whole serum (STJ13100004) at 1:200 dilution incubated overnight at 4C, developed with DAB/No and counterstained with hematoxylin.



IHC on rat spinal cord (paraffin section) using Rabbit antibody to autophagy-related protein 16-1 (ATG16L1, APG16L) isoforms 1, 2, 3: whole serum (STJ13100004) at 1:200 dilution incubated overnight at 4C, developed with DAB/No and counterstained with hematoxylin.



IHC on rat spinal cord (paraffin section) using Rabbit antibody to autophagy-related protein 16-1 (ATG16L1, APG16L) isoforms 1, 2, 3: whole serum (STJ13100004) at 1:200 dilution incubated overnight at 4C, developed with DAB/No and counterstained with hematoxylin.

This product is suitable for in-vitro studies under the RESEARCH USE ONLY [RUO] licence. This product must not be used as for diagnostic or other medical purposes.
 St John's Laboratory Ltd, Knowledge Dock Business Centre, University Way, London, E16 2RD | Tel: 0208 223 3081