

Anti-MT-ND4L antibody (STJ119950)

STJ119950

GENERAL INFORMATION

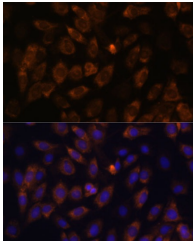
Product Type	Primary antibodies
Short Description	Rabbit polyclonal antibody anti-MT-ND4L is suitable for use in Immunofluorescence.
Applications	IF
Host/Source	Rabbit
Reactivity	Mouse, Rat

PRODUCT PROPERTIES

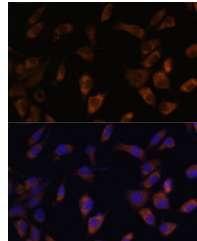
Clonality	Polyclonal
Clone ID	
Concentration	
Conjugation	Unconjugated
Purification	Affinity purification
Dilution Range	IF 1:50-1:200
Formulation	PBS containing 0.02% Sodium Azide, 50% Glycerol, pH7.3.
Isotype	IgG
Storage Instruction	Store in a freezer at -20°C and avoid freeze-thaw cycles.

TARGET INFORMATION

Gene ID	4539
Gene Symbol	MT-ND4L
Uniprot ID	NU4LM_HUMAN
Immunogen	Recombinant protein of human MT-ND4L.
Immunogen Region	
Specificity	
Immunogen Sequence	



Immunofluorescence analysis of C6 cells using MT-ND4L antibody (STJ119950) at dilution of 1:100. Blue: DAPI for nuclear staining.



Immunofluorescence analysis of L929 cells using MT-ND4L antibody (STJ119950) at dilution of 1:100. Blue: DAPI for nuclear staining.

This product is suitable for in-vitro studies under the RESEARCH USE ONLY [RUO] licence. This product must not be used as for diagnostic or other medical purposes.

St John's Laboratory Ltd, Knowledge Dock Business Centre, University Way, London, E16 2RD | Tel: 0208 223 3081