

## Anti-Mono-Methyl-Histone H4-K5 antibody (STJ119872)

STJ119872

### GENERAL INFORMATION

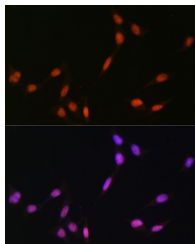
<b>Product Type</b>	Primary antibodies
<b>Short Description</b>	Rabbit polyclonal antibody anti-Mono-Methyl-Histone H4-K5 is suitable for use in Immunofluorescence.
<b>Applications</b>	IF
<b>Host/Source</b>	Rabbit
<b>Reactivity</b>	Human, Mouse, Rat

### PRODUCT PROPERTIES

<b>Clonality</b>	Polyclonal
<b>Clone ID</b>	
<b>Concentration</b>	
<b>Conjugation</b>	Unconjugated
<b>Purification</b>	Affinity purification
<b>Dilution Range</b>	IF 1:50-1:200
<b>Formulation</b>	PBS containing 0.02% Sodium Azide, 50% Glycerol, pH7.3.
<b>Isotype</b>	IgG
<b>Storage Instruction</b>	Store in a freezer at -20°C and avoid freeze-thaw cycles.

### TARGET INFORMATION

<b>Gene ID</b>	<a href="#">121504/554313/8294/8359/8360/8361/8362/8363/8364/8365/8366/8367/8368/8370</a>
<b>Gene Symbol</b>	<a href="#">H4C1.H4C2.H4C3.H4C4.H4C5.H4C6.H4C8.H4C9.H4C11.H4C12.H4C13.H4C14.H4C15.H4-16</a>
<b>Uniprot ID</b>	<a href="#">H4_HUMAN</a>
<b>Immunogen</b>	A synthetic peptide of human MonoMethyl-Histone H4-K5.
<b>Immunogen Region</b>	
<b>Specificity</b>	
<b>Immunogen Sequence</b>	



Immunofluorescence analysis of NIH-3T3 cells using MonoMethyl-Histone H4-K5 polyclonal antibody (STJ119872) at dilution of 1:100. Blue: DAPI for nuclear staining.