

Anti-RHBDF1 antibody (200-400) (STJ119793)

STJ119793

GENERAL INFORMATION

| | |
|--------------------------|--|
| Product Type | Primary antibodies |
| Short Description | Rabbit polyclonal antibody anti-RHBDF1 (200-400) is suitable for use in Western Blot and Immunofluorescence. |
| Applications | WB, IF |
| Host/Source | Rabbit |
| Reactivity | Mouse, Rat |

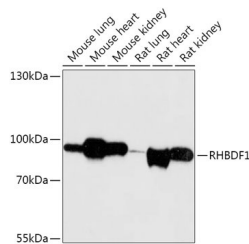
PRODUCT PROPERTIES

| | |
|----------------------------|---|
| Clonality | Polyclonal |
| Clone ID | |
| Concentration | |
| Conjugation | Unconjugated |
| Purification | Affinity purification |
| Dilution Range | WB 1:500-1:2000 IF 1:50-1:200 |
| Formulation | PBS containing 0.02% Sodium Azide, 50% Glycerol, pH7.3. |
| Isotype | IgG |
| Storage Instruction | Store in a freezer at -20°C and avoid freeze-thaw cycles. |

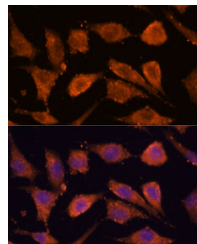
TARGET INFORMATION

| | |
|-------------------------|--|
| Gene ID | 64285 |
| Gene Symbol | RHBDF1 |
| Uniprot ID | RHDF1_HUMAN |
| Immunogen | Recombinant fusion protein containing a sequence corresponding to amino acids 200-400 of human RHBDF1 (NP_071895.3). |
| Immunogen Region | 200-400 |

Specificity
Immunogen
Sequence



Western blot analysis of extracts of various cell lines, using RHBDF1 antibody (STJ119793) at 1:1000 dilution. Secondary antibody: HRP Goat Anti-rabbit IgG (H+L) at 1:10000 dilution. Lysates/proteins: 25ug per lane. Blocking buffer: 3% nonfat dry milk in TBST. Detection: ECL Basic Kit. Exposure time: 30s.



Immunofluorescence analysis of L929 cells using RHBDF1 antibody (STJ119793) at dilution of 1:100. Blue: DAPI for nuclear staining.

This product is suitable for in-vitro studies under the RESEARCH USE ONLY [RUO] licence. This product must not be used as for diagnostic or other medical purposes.
St John's Laboratory Ltd, Knowledge Dock Business Centre, University Way, London, E16 2RD | Tel: 0208 223 3081