

Anti-BMPR1B antibody (1-126) (STJ119430)

STJ119430

GENERAL INFORMATION

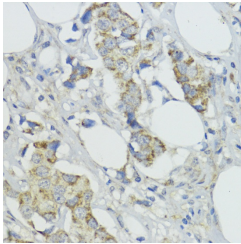
Product Type	Primary antibodies
Short Description	Rabbit polyclonal antibody anti-BMPR1B (1-126) is suitable for use in Immunohistochemistry and Immunofluorescence.
Applications	IHC, IF
Host/Source	Rabbit
Reactivity	Human, Mouse, Rat

PRODUCT PROPERTIES

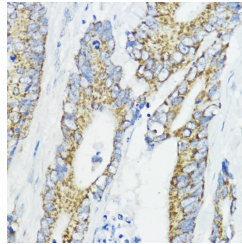
Clonality	Polyclonal
Clone ID	
Concentration	
Conjugation	Unconjugated
Purification	Affinity purification
Dilution Range	IHC 1:50-1:100 IF 1:50-1:200
Formulation	PBS containing 0.02% Sodium Azide, 50% Glycerol, pH7.3.
Isotype	IgG
Storage Instruction	Store in a freezer at -20°C and avoid freeze-thaw cycles.

TARGET INFORMATION

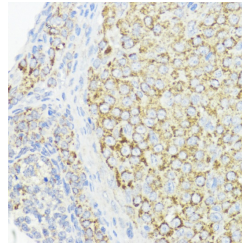
Gene ID	658
Gene Symbol	BMPR1B
Uniprot ID	BMR1B_HUMAN
Immunogen	Recombinant fusion protein containing a sequence corresponding to amino acids 1-126 of human BMPR1B (NP_001194.1).
Immunogen Region	1-126
Specificity	
Immunogen Sequence	



Immunohistochemistry of paraffin-embedded human mammary cancer using BMPR1B antibody (STJ119430) at dilution of 1:200 (40x lens).



Immunohistochemistry of paraffin-embedded human colon carcinoma using BMPR1B antibody (STJ119430) at dilution of 1:200 (40x lens).



Immunohistochemistry of paraffin-embedded rat ovary using BMPR1B antibody (STJ119430) at dilution of 1:200 (40x lens).

This product is suitable for in-vitro studies under the RESEARCH USE ONLY [RUO] licence. This product must not be used as for diagnostic or other medical purposes.
St John's Laboratory Ltd, Knowledge Dock Business Centre, University Way, London, E16 2RD | Tel: 0208 223 3081