

Anti-RPP38 antibody (20-110) (STJ119300)

STJ119300

GENERAL INFORMATION

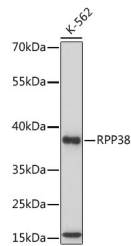
Product Type	Primary antibodies
Short Description	Rabbit polyclonal antibody anti-RPP38 (20-110) is suitable for use in Western Blot, Immunohistochemistry and Immunofluorescence.
Applications	WB, IHC, IF
Host/Source	Rabbit
Reactivity	Human

PRODUCT PROPERTIES

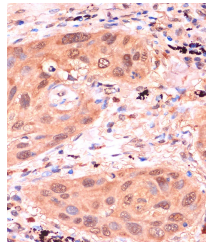
Clonality	Polyclonal
Clone ID	
Concentration	
Conjugation	Unconjugated
Purification	Affinity purification
Dilution Range	WB 1:500-1:2000 IHC 1:50-1:200 IF 1:50-1:200
Formulation	PBS containing 0.02% Sodium Azide, 50% Glycerol, pH7.3.
Isotype	IgG
Storage Instruction	Store in a freezer at -20°C and avoid freeze-thaw cycles.

TARGET INFORMATION

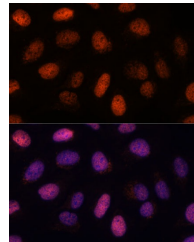
Gene ID	10557
Gene Symbol	RPP38
Uniprot ID	RPP38_HUMAN
Immunogen	Recombinant fusion protein containing a sequence corresponding to amino acids 20-110 of human RPP38 (NP_892117.1).
Immunogen Region	20-110
Specificity	
Immunogen Sequence	



Western blot analysis of extracts of various cell lines, using RPP38 antibody (STJ119300) at 1:1000 dilution. Secondary antibody: HRP Goat Anti-rabbit IgG (H+L) at 1:10000 dilution. Lysates/proteins: 25µg per lane. Blocking buffer: 3% nonfat dry milk in TBST. Detection: ECL Basic Kit. Exposure time: 30s.



Immunohistochemistry of paraffin-embedded Human lung cancer using RPP38 rabbit polyclonal antibody (STJ119300) at dilution of 1:100 (40x lens).



Immunofluorescence analysis of U-2 OS cells using RPP38 antibody (STJ119300) at dilution of 1:100. Blue: DAPI for nuclear staining.

This product is suitable for in-vitro studies under the RESEARCH USE ONLY [RUO] licence. This product must not be used as for diagnostic or other medical purposes.
St John's Laboratory Ltd, Knowledge Dock Business Centre, University Way, London, E16 2RD | Tel: 0208 223 3081