

Anti-ARPC1A antibody (171-350) (STJ119299)

STJ119299

GENERAL INFORMATION

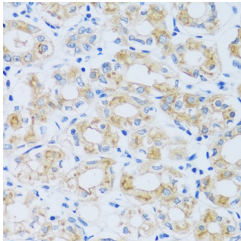
Product Type	Primary antibodies
Short Description	Rabbit polyclonal antibody anti-ARPC1A (171-350) is suitable for use in Western Blot and Immunohistochemistry.
Applications	WB, IHC
Host/Source	Rabbit
Reactivity	Human, Mouse, Rat

PRODUCT PROPERTIES

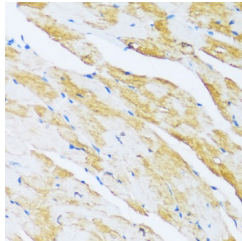
Clonality	Polyclonal
Clone ID	
Concentration	
Conjugation	Unconjugated
Purification	Affinity purification
Dilution Range	WB 1:500-1:2000 IHC 1:50-1:200
Formulation	PBS containing 0.02% Sodium Azide, 50% Glycerol, pH7.3.
Isotype	IgG
Storage Instruction	Store in a freezer at -20°C and avoid freeze-thaw cycles.

TARGET INFORMATION

Gene ID	10552
Gene Symbol	ARPC1A
Uniprot ID	ARC1A_HUMAN
Immunogen	Recombinant fusion protein containing a sequence corresponding to amino acids 171-350 of human ARPC1A (NP_006400.2).
Immunogen Region	171-350
Specificity	
Immunogen Sequence	



Immunohistochemistry of paraffin-embedded human stomach using ARPC1A antibody (STJ119299) at dilution of 1:100 (40x lens).



Immunohistochemistry of paraffin-embedded mouse heart using ARPC1A antibody (STJ119299) at dilution of 1:100 (40x lens).