

Anti-CADPS antibody (1020-1100) (STJ119275)

STJ119275

GENERAL INFORMATION

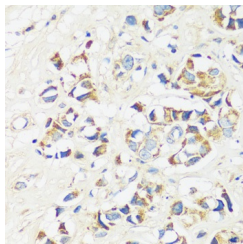
Product Type	Primary antibodies
Short Description	Rabbit polyclonal antibody anti-CADPS (1020-1100) is suitable for use in Immunohistochemistry.
Applications	IHC
Host/Source	Rabbit
Reactivity	Human

PRODUCT PROPERTIES

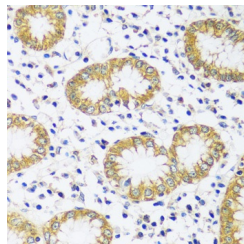
Clonality	Polyclonal
Clone ID	
Concentration	
Conjugation	Unconjugated
Purification	Affinity purification
Dilution Range	IHC 1:50-1:200
Formulation	PBS containing 0.02% Sodium Azide, 50% Glycerol, pH7.3.
Isotype	IgG
Storage Instruction	Store in a freezer at -20°C and avoid freeze-thaw cycles.

TARGET INFORMATION

Gene ID	8618
Gene Symbol	CADPS
Uniprot ID	CAPS1_HUMAN
Immunogen	Recombinant fusion protein containing a sequence corresponding to amino acids 1020-1100 of human CADPS (NP_899630.1).
Immunogen Region	1020-1100
Specificity	
Immunogen Sequence	



Immunohistochemistry of paraffin-embedded human breast cancer using CADPS antibody (STJ119275) at dilution of 1:100 (40x lens).



Immunohistochemistry of paraffin-embedded human stomach using CADPS antibody (STJ119275) at dilution of 1:100 (40x lens).

This product is suitable for in-vitro studies under the RESEARCH USE ONLY [RUO] licence. This product must not be used as for diagnostic or other medical purposes.
St John's Laboratory Ltd, Knowledge Dock Business Centre, University Way, London, E16 2RD | Tel: 0208 223 3081