

**Anti-Histone H4 antibody (STJ119273)**  
STJ119273

**GENERAL INFORMATION**

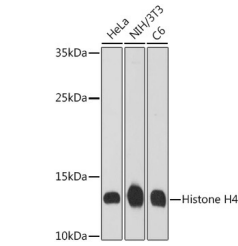
|                          |  |
|--------------------------|--|
| <b>Product Type</b>      | Primary antibodies   |
| <b>Short Description</b> | Rabbit polyclonal antibody anti-Histone H4 is suitable for use in Western Blot and Immunofluorescence. |
| <b>Applications</b>      | WB, IF   |
| <b>Host/Source</b>       | Rabbit   |
| <b>Reactivity</b>        | Human, Mouse, Rat  |

**PRODUCT PROPERTIES**

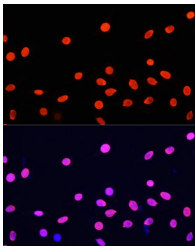
|                            |   |
|----------------------------|---|
| <b>Clonality</b>           | Polyclonal  |
| <b>Clone ID</b>            |   |
| <b>Concentration</b>       |   |
| <b>Conjugation</b>         | Unconjugated  |
| <b>Purification</b>        | Affinity purification                                     |
| <b>Dilution Range</b>      | WB 1:500-1:2000<br>IF 1:50-1:200                          |
| <b>Formulation</b>         | PBS containing 0.02% Sodium Azide, 50% Glycerol, pH7.3.   |
| <b>Isotype</b>             | IgG   |
| <b>Storage Instruction</b> | Store in a freezer at -20°C and avoid freeze-thaw cycles. |

**TARGET INFORMATION**

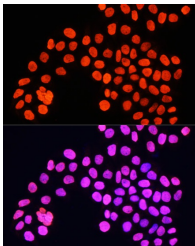
|                           |   |
|---------------------------|---|
| <b>Gene ID</b>            | 121504/554313/8294/8359/8360/8361/8362/8363/8364/8365/8366/8367/8368/8370   |
| <b>Gene Symbol</b>        | H4C1.H4C2.H4C3.H4C4.H4C5.H4C6.H4C8.H4C9.H4C11.H4C12.H4C13.H4C14.H4C15.H4-16 |
| <b>Uniprot ID</b>         | H4_HUMAN  |
| <b>Immunogen</b>          | A synthetic peptide of human Histone H4.                                    |
| <b>Immunogen Region</b>   |   |
| <b>Specificity</b>        |   |
| <b>Immunogen Sequence</b> |   |



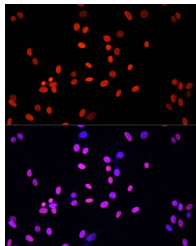
Western blot analysis of extracts of various cell lines, using Histone H4 antibody (STJ119273) at 1:1000 dilution. Secondary antibody: HRP Goat Anti-rabbit IgG (H+L) at 1:10000 dilution. Lysates/proteins: 25ug per lane. Blocking buffer: 3% nonfat dry milk in TBST. Detection: ECL Basic Kit. Exposure time: 90s.



Immunofluorescence analysis of C6 cells using Histone H4 antibody (STJ119273) at dilution of 1:100. Blue: DAPI for nuclear staining.



Immunofluorescence analysis of HeLa cells using Histone H4 antibody (STJ119273) at dilution of 1:100. Blue: DAPI for nuclear staining.



Immunofluorescence analysis of NIH/3T3 cells using Histone H4 antibody (STJ119273) at dilution of 1:100. Blue: DAPI for nuclear staining.

This product is suitable for in-vitro studies under the RESEARCH USE ONLY [RUO] licence. This product must not be used as for diagnostic or other medical purposes.  
St John's Laboratory Ltd, Knowledge Dock Business Centre, University Way, London, E16 2RD | Tel: 0208 223 3081