

Anti-THBS1 antibody (150-250) (STJ119258)

STJ119258

GENERAL INFORMATION

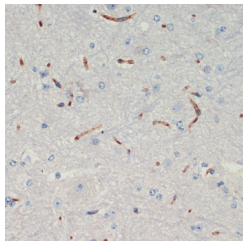
Product Type	Primary antibodies
Short Description	Rabbit polyclonal antibody anti-THBS1 (150-250) is suitable for use in Immunohistochemistry.
Applications	IHC
Host/Source	Rabbit
Reactivity	Mouse

PRODUCT PROPERTIES

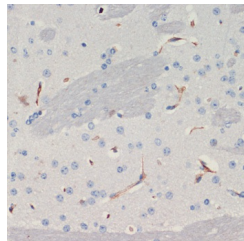
Clonality	Polyclonal
Clone ID	
Concentration	
Conjugation	Unconjugated
Purification	Affinity purification
Dilution Range	IHC 1:50-1:200
Formulation	PBS containing 0.02% Sodium Azide, 50% Glycerol, pH7.3.
Isotype	IgG
Storage Instruction	Store in a freezer at -20°C and avoid freeze-thaw cycles.

TARGET INFORMATION

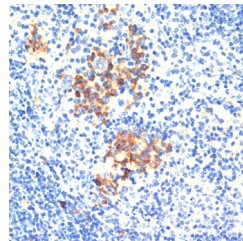
Gene ID	7057
Gene Symbol	THBS1
Uniprot ID	TSP1_HUMAN
Immunogen	A synthetic peptide corresponding to a sequence within amino acids 150-250 of human THBS1 (NP_003237.2).
Immunogen Region	150-250
Specificity	
Immunogen Sequence	



Immunohistochemistry of paraffin-embedded mouse spinal cord using THBS1 antibody (STJ119258) at dilution of 1:200 (40x lens).



Immunohistochemistry of paraffin-embedded mouse brain using THBS1 antibody (STJ119258) at dilution of 1:200 (40x lens).



Immunohistochemistry of paraffin-embedded mouse spleen using THBS1 antibody (STJ119258) at dilution of 1:200 (40x lens).

This product is suitable for in-vitro studies under the RESEARCH USE ONLY [RUO] licence. This product must not be used as for diagnostic or other medical purposes.
St John's Laboratory Ltd, Knowledge Dock Business Centre, University Way, London, E16 2RD | Tel: 0208 223 3081