

Anti-CAST antibody (406-695) (STJ119180)

STJ119180

GENERAL INFORMATION

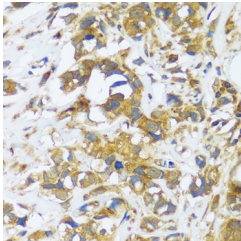
Product Type	Primary antibodies
Short Description	Rabbit polyclonal antibody anti-CAST (406-695) is suitable for use in Western Blot and Immunohistochemistry.
Applications	WB, IHC
Host/Source	Rabbit
Reactivity	Human, Mouse

PRODUCT PROPERTIES

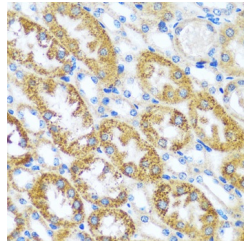
Clonality	Polyclonal
Clone ID	
Concentration	
Conjugation	Unconjugated
Purification	Affinity purification
Dilution Range	WB 1:500-1:2000 IHC 1:50-1:200
Formulation	PBS containing 0.02% Sodium Azide, 50% Glycerol, pH7.3.
Isotype	IgG
Storage Instruction	Store in a freezer at -20°C and avoid freeze-thaw cycles.

TARGET INFORMATION

Gene ID	831
Gene Symbol	CAST
Uniprot ID	ICAL_HUMAN
Immunogen	Recombinant fusion protein containing a sequence corresponding to amino acids 406-695 of human CAST (NP_001177371.1).
Immunogen Region	406-695
Specificity	
Immunogen Sequence	



Immunohistochemistry of paraffin-embedded human breast cancer using CAST antibody (STJ119180) at dilution of 1:100 (40x lens).



Immunohistochemistry of paraffin-embedded mouse kidney using CAST antibody (STJ119180) at dilution of 1:100 (40x lens).

This product is suitable for in-vitro studies under the RESEARCH USE ONLY [RUO] licence. This product must not be used as for diagnostic or other medical purposes.
St John's Laboratory Ltd, Knowledge Dock Business Centre, University Way, London, E16 2RD | Tel: 0208 223 3081