

Anti-SRSF7 antibody (60-120) (STJ119149)

STJ119149

GENERAL INFORMATION

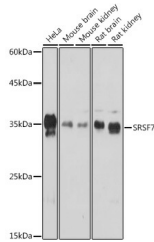
Product Type	Primary antibodies
Short Description	Rabbit polyclonal antibody anti-SRSF7 (60-120) is suitable for use in Western Blot, Immunohistochemistry and Immunofluorescence.
Applications	WB, IHC, IF
Host/Source	Rabbit
Reactivity	Human, Mouse, Rat

PRODUCT PROPERTIES

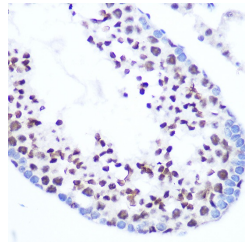
Clonality	Polyclonal
Clone ID	
Concentration	
Conjugation	Unconjugated
Purification	Affinity purification
Dilution Range	WB 1:500-1:1000 IHC 1:50-1:100 IF 1:50-1:100
Formulation	PBS containing 0.02% Sodium Azide, 50% Glycerol, pH7.3.
Isotype	IgG
Storage Instruction	Store in a freezer at -20°C and avoid freeze-thaw cycles.

TARGET INFORMATION

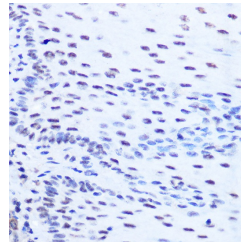
Gene ID	6432
Gene Symbol	SRSF7
Uniprot ID	SRSF7_HUMAN
Immunogen	Recombinant fusion protein containing a sequence corresponding to amino acids 60-120 of human SRSF7 (NP_001026854).
Immunogen Region	60-120
Specificity	
Immunogen Sequence	



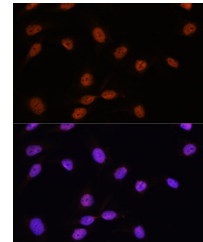
Western blot analysis of extracts of various cell lines, using SRSF7 rabbit polyclonal antibody (STJ119149) at 1:1000 dilution. Secondary antibody: HRP Goat Anti-rabbit IgG (H+L) at 1:10000 dilution. Lysates/proteins: 25ug per lane. Blocking buffer: 3% nonfat dry milk in TBST. Detection: ECL Basic Kit. Exposure time: 60s.



Immunohistochemistry of paraffin-embedded mouse testis using SRSF7 rabbit polyclonal antibody (STJ119149) at dilution of 1:100 (40x lens).



Immunohistochemistry of paraffin-embedded human esophageal using SRSF7 rabbit polyclonal antibody (STJ119149) at dilution of 1:100 (40x lens).



Immunofluorescence analysis of U-2 OS cells using SRSF7 antibody (STJ119149) at dilution of 1:100. Blue: DAPI for nuclear staining.

This product is suitable for in-vitro studies under the RESEARCH USE ONLY [RUO] licence. This product must not be used as for diagnostic or other medical purposes.
St John's Laboratory Ltd, Knowledge Dock Business Centre, University Way, London, E16 2RD | Tel: 0208 223 3081