

Anti-AMOTL2 antibody (638-837) (STJ119134)

STJ119134

GENERAL INFORMATION

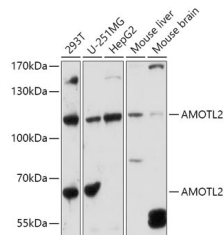
Product Type	Primary antibodies
Short Description	Rabbit polyclonal antibody anti-AMOTL2 (638-837) is suitable for use in Western Blot, Immunohistochemistry and Immunofluorescence.
Applications	WB, IHC, IF
Host/Source	Rabbit
Reactivity	Human, Mouse

PRODUCT PROPERTIES

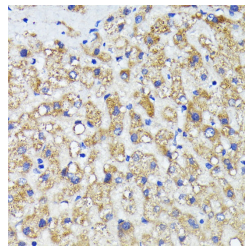
Clonality	Polyclonal
Clone ID	
Concentration	
Conjugation	Unconjugated
Purification	Affinity purification
Dilution Range	WB 1:500-1:2000 IHC 1:50-1:100 IF 1:50-1:100
Formulation	PBS containing 0.02% Sodium Azide, 50% Glycerol, pH7.3.
Isotype	IgG
Storage Instruction	Store in a freezer at -20°C and avoid freeze-thaw cycles.

TARGET INFORMATION

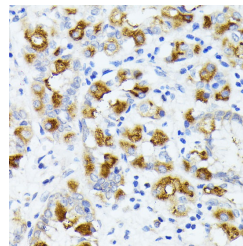
Gene ID	51421
Gene Symbol	AMOTL2
Uniprot ID	AMOL2_HUMAN
Immunogen	Recombinant fusion protein containing a sequence corresponding to amino acids 638-837 of human AMOTL2 (NP_001265612.1).
Immunogen Region	638-837
Specificity	
Immunogen Sequence	



Western blot analysis of extracts of various cell lines, using AMOTL2 antibody (STJ119134) at 1:1000 dilution. Secondary antibody: HRP Goat Anti-rabbit IgG (H+L) at 1:10000 dilution. Lysates/proteins: 25µg per lane. Blocking buffer: 3% nonfat dry milk in TBST. Detection: ECL Basic Kit. Exposure time: 30s.



Immunohistochemistry of paraffin-embedded human liver cancer using AMOTL2 antibody (STJ119134) at dilution of 1:200 (40x lens).



Immunohistochemistry of paraffin-embedded human stomach using AMOTL2 antibody (STJ119134) at dilution of 1:200 (40x lens).