

Anti-EIF4EBP1 antibody (STJ119085)

STJ119085

GENERAL INFORMATION

Product Type	Primary antibodies
Short Description	Rabbit polyclonal antibody anti-EIF4EBP1 is suitable for use in Immunohistochemistry and Immunofluorescence.
Applications	IHC, IF
Host/Source	Rabbit
Reactivity	Human, Mouse, Rat

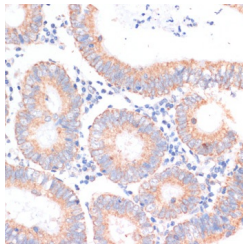
PRODUCT PROPERTIES

Clonality	Polyclonal
Clone ID	
Concentration	
Conjugation	Unconjugated
Purification	Affinity purification
Dilution Range	IHC 1:50-1:200 IF 1:50-1:200
Formulation	PBS containing 0.02% Sodium Azide, 50% Glycerol, pH7.3.
Isotype	IgG
Storage Instruction	Store in a freezer at -20°C and avoid freeze-thaw cycles.

TARGET INFORMATION

Gene ID	1978
Gene Symbol	EIF4EBP1
Uniprot ID	4EBP1_HUMAN
Immunogen	A synthetic peptide corresponding to a sequence within amino acids 50 to the C-terminus of human eIF4EBP1 (NP_004086.1).

Immunogen Region
Specificity
Immunogen
Sequence



Immunohistochemistry of paraffin-embedded human colon carcinoma using eIF4EBP1 antibody (STJ119085) at dilution of 1:100 (40x lens). Perform microwave antigen retrieval with 10 mM PBS buffer pH 7.2 before commencing with immunohistochemistry staining protocol.