

Anti-GMPPB antibody (50-250) (STJ118947)

STJ118947

GENERAL INFORMATION

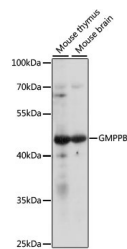
Product Type	Primary antibodies
Short Description	Rabbit polyclonal antibody anti-GMPPB (50-250) is suitable for use in Western Blot.
Applications	WB
Host/Source	Rabbit
Reactivity	Mouse

PRODUCT PROPERTIES

Clonality	Polyclonal
Clone ID	
Concentration	
Conjugation	Unconjugated
Purification	Affinity purification
Dilution Range	WB 1:500-1:2000
Formulation	PBS containing 0.02% Sodium Azide, 50% Glycerol, pH7.3.
Isotype	IgG
Storage Instruction	Store in a freezer at -20°C and avoid freeze-thaw cycles.

TARGET INFORMATION

Gene ID	29925
Gene Symbol	GMPPB
Uniprot ID	GMPPB_HUMAN
Immunogen	Recombinant fusion protein containing a sequence corresponding to amino acids 50-250 of human GMPPB (NP_068806.1).
Immunogen Region	50-250
Specificity	
Immunogen Sequence	



Western blot analysis of extracts of various cell lines, using GMPPB antibody (STJ118947) at 1:1000 dilution. Secondary antibody: HRP-Scat Anti-rabbit IgG (H+L) at 1:10000 dilution. Lysates/proteins: 25ug per lane. Blocking buffer: 3% nonfat dry milk in TBST. Detection: ECL Enhanced Kit. Exposure time: 10s.

This product is suitable for in-vitro studies under the RESEARCH USE ONLY [RUO] licence. This product must not be used as for diagnostic or other medical purposes.
 St John's Laboratory Ltd, Knowledge Dock Business Centre, University Way, London, E16 2RD | Tel: 0208 223 3081