

Anti-KATNA1 antibody (1-167) (STJ118918)

STJ118918

GENERAL INFORMATION

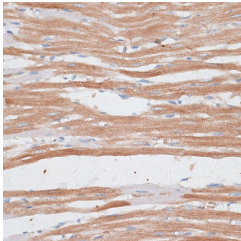
Product Type	Primary antibodies
Short Description	Rabbit polyclonal antibody anti-KATNA1 (1-167) is suitable for use in Western Blot and Immunohistochemistry.
Applications	WB, IHC
Host/Source	Rabbit
Reactivity	Human, Mouse, Rat

PRODUCT PROPERTIES

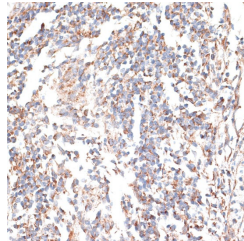
Clonality	Polyclonal
Clone ID	
Concentration	
Conjugation	Unconjugated
Purification	Affinity purification
Dilution Range	WB 1:1000-1:2000 IHC 1:50-1:200
Formulation	PBS containing 0.02% Sodium Azide, 50% Glycerol, pH7.3.
Isotype	IgG
Storage Instruction	Store in a freezer at -20°C and avoid freeze-thaw cycles.

TARGET INFORMATION

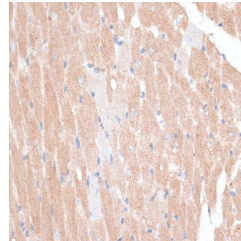
Gene ID	11104
Gene Symbol	KATNA1
Uniprot ID	KTNA1_HUMAN
Immunogen	Recombinant fusion protein containing a sequence corresponding to amino acids 1-167 of human KATNA1 (NP_001191005.1).
Immunogen Region	1-167
Specificity	
Immunogen Sequence	



Immunohistochemistry of paraffin-embedded rat heart using KATNA1 antibody (STJ118918) at dilution of 1:100 (40x lens).



Immunohistochemistry of paraffin-embedded human tonsil using KATNA1 antibody (STJ118918) at dilution of 1:100 (40x lens).



Immunohistochemistry of paraffin-embedded mouse heart using KATNA1 antibody (STJ118918) at dilution of 1:100 (40x lens).

This product is suitable for in-vitro studies under the RESEARCH USE ONLY [RUO] licence. This product must not be used as for diagnostic or other medical purposes.
 St John's Laboratory Ltd, Knowledge Dock Business Centre, University Way, London, E16 2RD | Tel: 0208 223 3081