

Anti-TOP2A antibody (1050-1150) (STJ118868)

STJ118868

GENERAL INFORMATION

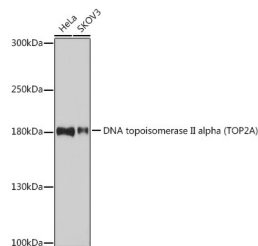
Product Type	Primary antibodies
Short Description	Rabbit polyclonal antibody anti-TOP2A (1050-1150) is suitable for use in Western Blot.
Applications	WB
Host/Source	Rabbit
Reactivity	Human

PRODUCT PROPERTIES

Clonality	Polyclonal
Clone ID	
Concentration	
Conjugation	Unconjugated
Purification	Affinity purification
Dilution Range	WB 1:500-1:2000
Formulation	PBS containing 0.02% Sodium Azide, 50% Glycerol, pH7.3.
Isotype	IgG
Storage	Store in a freezer at -20°C and avoid freeze-thaw cycles.
Instruction	

TARGET INFORMATION

Gene ID	7153
Gene Symbol	TOP2A
Uniprot ID	TOP2A_HUMAN
Immunogen	A synthetic peptide corresponding to a sequence within amino acids 1050-1150 of human DNA topoisomerase II alpha (DNA topoisomerase II alpha (TOP2A)) (NP_001058.2).
Immunogen Region	1050-1150
Specificity	
Immunogen Sequence	



Western blot analysis of extracts of various cell lines, using DNA topoisomerase II alpha (DNA topoisomerase II alpha (TOP2A)) antibody (STJ118868) at 1:1000 dilution. Secondary antibody: HRP Goat Anti-rabbit IgG (H+L) at 1:10000 dilution. Lysates/proteins: 25ug per lane. Blocking buffer: 3% nonfat dry milk in TBST. Detection: ECL Enhanced Kit. Exposure time: 300s.

This product is suitable for in-vitro studies under the RESEARCH USE ONLY [RUO] licence. This product must not be used as for diagnostic or other medical purposes.
 St John's Laboratory Ltd, Knowledge Dock Business Centre, University Way, London, E16 2RD | Tel: 0208 223 3081