

Anti-BMP1 antibody (725-986) (STJ118781)

STJ118781

GENERAL INFORMATION

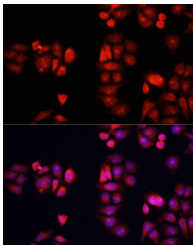
Product Type	Primary antibodies
Short Description	Rabbit polyclonal antibody anti-BMP1 (725-986) is suitable for use in Immunofluorescence.
Applications	IF
Host/Source	Rabbit
Reactivity	Human

PRODUCT PROPERTIES

Clonality	Polyclonal
Clone ID	
Concentration	
Conjugation	Unconjugated
Purification	Affinity purification
Dilution Range	IF 1:50-1:200
Formulation	PBS containing 0.02% Sodium Azide, 50% Glycerol, pH7.3.
Isotype	IgG
Storage Instruction	Store in a freezer at -20°C and avoid freeze-thaw cycles.

TARGET INFORMATION

Gene ID	649
Gene Symbol	BMP1
Uniprot ID	BMP1_HUMAN
Immunogen	Recombinant fusion protein containing a sequence corresponding to amino acids 725-986 of human BMP1 (NP_006120.1).
Immunogen Region	725-986
Specificity	
Immunogen Sequence	



Immunofluorescence analysis of HeLa cells using BMP1 antibody (STJ118781) at dilution of 1:100. Blue: DAPI for nuclear staining.