

Anti-RPS6KA2 antibody (632-733) (STJ118735)

STJ118735

GENERAL INFORMATION

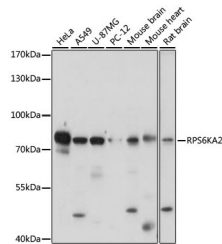
Product Type	Primary antibodies
Short Description	Rabbit polyclonal antibody anti-RPS6KA2 (632-733) is suitable for use in Western Blot, Immunohistochemistry and Immunofluorescence.
Applications	WB, IHC, IF
Host/Source	Rabbit
Reactivity	Human, Mouse, Rat

PRODUCT PROPERTIES

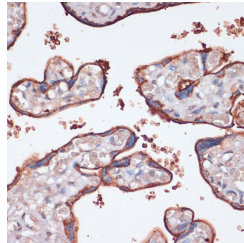
Clonality	Polyclonal
Clone ID	
Concentration	
Conjugation	Unconjugated
Purification	Affinity purification
Dilution Range	WB 1:500-1:2000 IHC 1:100-1:200 IF 1:50-1:200
Formulation	PBS containing 0.02% Sodium Azide, 50% Glycerol, pH7.3.
Isotype	IgG
Storage Instruction	Store in a freezer at -20°C and avoid freeze-thaw cycles.

TARGET INFORMATION

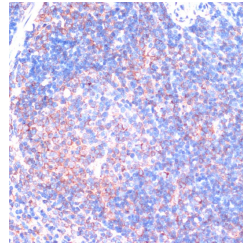
Gene ID	6196
Gene Symbol	RPS6KA2
Uniprot ID	KS6A2_HUMAN
Immunogen	Recombinant fusion protein containing a sequence corresponding to amino acids 632-733 of human RPS6KA2 (NP_066958.2).
Immunogen Region	632-733
Specificity	
Immunogen Sequence	



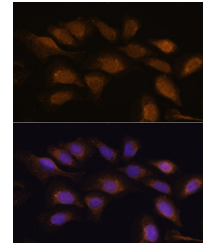
Western blot analysis of extracts of various cell lines, using RPS6KA2 antibody (STJ118735) at 1:1000 dilution. Secondary antibody: HRP Goat Anti-rabbit IgG (H+L) at 1:10000 dilution. Lysates/proteins: 25ug per lane. Blocking buffer: 3% nonfat dry milk in TBST. Detection: ECL Basic Kit. Exposure time: 30s.



Immunohistochemistry of paraffin-embedded human placenta using RPS6KA2 antibody (STJ118735) at dilution of 1:100 (40x lens).



Immunohistochemistry of paraffin-embedded mouse spleen using RPS6KA2 antibody (STJ118735) at dilution of 1:100 (40x lens).



Immunofluorescence analysis of U-2 OS cells using RPS6KA2 antibody (STJ118735) at dilution of 1:100. Blue: DAPI for nuclear staining.