

Anti-ACSL1 antibody (46-275) (STJ118692)

STJ118692

GENERAL INFORMATION

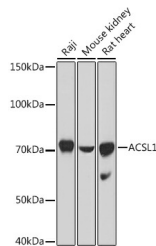
Product Type	Primary antibodies
Short Description	Rabbit polyclonal antibody anti-ACSL1 (46-275) is suitable for use in Western Blot, Immunofluorescence and Immunoprecipitation.
Applications	WB, IF, IP
Host/Source	Rabbit
Reactivity	Human, Mouse, Rat

PRODUCT PROPERTIES

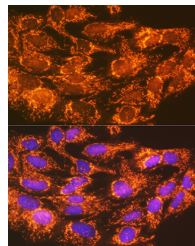
Clonality	Polyclonal
Clone ID	
Concentration	
Conjugation	Unconjugated
Purification	Affinity purification
Dilution Range	WB 1:500-1:2000 IF 1:50-1:200 IP 1:50-1:200
Formulation	PBS containing 0.02% Sodium Azide, 50% Glycerol, pH7.3.
Isotype	IgG
Storage Instruction	Store in a freezer at -20°C and avoid freeze-thaw cycles.

TARGET INFORMATION

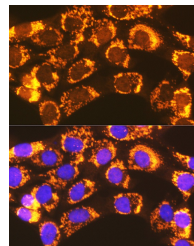
Gene ID	2180
Gene Symbol	ACSL1
Uniprot ID	ACSL1_HUMAN
Immunogen	Recombinant fusion protein containing a sequence corresponding to amino acids 46-275 of human ACSL1 (NP_001273637.1).
Immunogen Region	46-275
Specificity	
Immunogen Sequence	



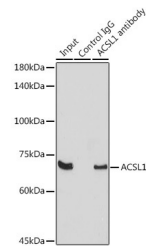
Western blot analysis of extracts of various cell lines, using ACSL1 antibody (STJ118692) at 1:1000 dilution. Secondary antibody: HRP Goat Anti-rabbit IgG (H+L) at 1:10000 dilution. Lysates/proteins: 25µg per lane. Blocking buffer: 3% nonfat dry milk in TBST. Detection: ECL Basic Kit. Exposure time: 10s.



Immunofluorescence analysis of C6 cells using ACSL1 rabbit polyclonal antibody (STJ118692) at dilution of 1:100 (40x lens). Blue: DAPI for nuclear staining.



Immunofluorescence analysis of NIH-3T3 cells using ACSL1 rabbit polyclonal antibody (STJ118692) at dilution of 1:100 (40x lens). Blue: DAPI for nuclear staining.



Immunoprecipitation analysis of 300µg extracts of Raji cells using 3µg ACSL1 antibody (STJ118692). Western blot was performed from the immunoprecipitate using ACSL1 antibody (STJ118692) at a dilution of 1:1000.