

Anti-G6PC3 antibody (50-150) (STJ118673)

STJ118673

GENERAL INFORMATION

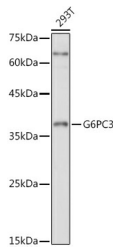
Product Type	Primary antibodies
Short Description	Rabbit polyclonal antibody anti-G6PC3 (50-150) is suitable for use in Western Blot and Immunofluorescence.
Applications	WB, IF
Host/Source	Rabbit
Reactivity	Human, Mouse, Rat

PRODUCT PROPERTIES

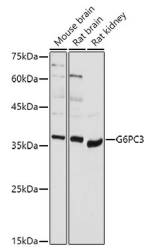
Clonality	Polyclonal
Clone ID	
Concentration	
Conjugation	Unconjugated
Purification	Affinity purification
Dilution Range	WB 1:500-1:2000 IF 1:50-1:200
Formulation	PBS containing 0.02% Sodium Azide, 50% Glycerol, pH7.3.
Isotype	IgG
Storage Instruction	Store in a freezer at -20°C and avoid freeze-thaw cycles.

TARGET INFORMATION

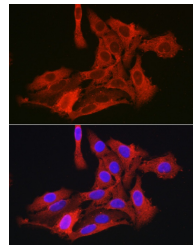
Gene ID	92579
Gene Symbol	G6PC3
Uniprot ID	G6PC3_HUMAN
Immunogen	A synthetic peptide corresponding to a sequence within amino acids 50-150 of human G6PC3 (NP_612396.1).
Immunogen Region	50-150
Specificity	
Immunogen Sequence	



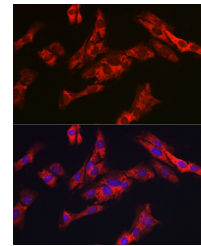
Western blot analysis of extracts of 293T cells, using G6PC3 antibody (STJ118673) at 1:1000 dilution. Secondary antibody: HRP Goat Anti-rabbit IgG (H+L) at 1:10000 dilution. Lysates/proteins: 25ug per lane. Blocking buffer: 3% nonfat dry milk in TBST. Detection: ECL Basic Kit. Exposure time: 3s.



Western blot analysis of extracts of various cell lines, using G6PC3 antibody (STJ118673) at 1:1000 dilution. Secondary antibody: HRP Goat Anti-rabbit IgG (H+L) at 1:10000 dilution. Lysates/proteins: 25ug per lane. Blocking buffer: 3% nonfat dry milk in TBST. Detection: ECL Basic Kit. Exposure time: 10s.



Immunofluorescence analysis of A-549 cells using G6PC3 rabbit polyclonal antibody (STJ118673) at dilution of 1:200 (40x lens). Blue: DAPI for nuclear staining.



Immunofluorescence analysis of C6 cells using G6PC3 rabbit polyclonal antibody (STJ118673) at dilution of 1:200 (40x lens). Blue: DAPI for nuclear staining.

This product is suitable for in-vitro studies under the RESEARCH USE ONLY [RUO] licence. This product must not be used as for diagnostic or other medical purposes.
St John's Laboratory Ltd, Knowledge Dock Business Centre, University Way, London, E16 2RD | Tel: 0208 223 3081