

Anti-WBSCR27 antibody (1-245) (STJ118616)

STJ118616

GENERAL INFORMATION

Product Type	Primary antibodies
Short Description	Rabbit polyclonal antibody anti-WBSCR27 (1-245) is suitable for use in Western Blot and Immunohistochemistry.
Applications	WB, IHC
Host/Source	Rabbit
Reactivity	Human, Mouse, Rat

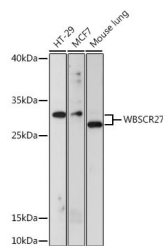
PRODUCT PROPERTIES

Clonality	Polyclonal
Clone ID	
Concentration	
Conjugation	Unconjugated
Purification	Affinity purification
Dilution Range	WB 1:500-1:2000 IHC 1:50-1:200
Formulation	PBS containing 0.02% Sodium Azide, 50% Glycerol, pH7.3.
Isotype	IgG
Storage Instruction	Store in a freezer at -20°C and avoid freeze-thaw cycles.

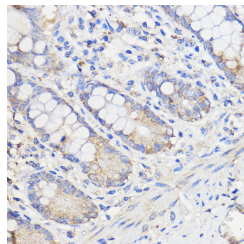
TARGET INFORMATION

Gene ID	155368
Gene Symbol	METTL27
Uniprot ID	MET27_HUMAN
Immunogen	Recombinant fusion protein containing a sequence corresponding to amino acids 1-245 of human WBSCR27 (NP_689772.2).
Immunogen Region	1-245

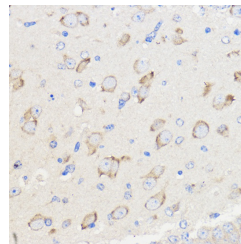
Specificity
Immunogen
Sequence



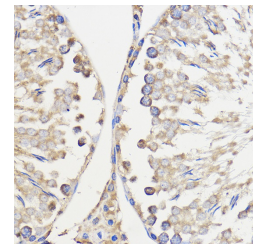
Western blot analysis of extracts of various cell lines, using WBSCR27 antibody (STJ118616) at 1:1000 dilution. Secondary antibody: HRP Goat Anti-rabbit IgG (H+L) at 1:10000 dilution. Lysates/proteins: 25ug per lane. Blocking buffer: 3% nonfat dry milk in TBST. Detection: ECL Basic Kit. Exposure time: 15s.



Immunohistochemistry of paraffin-embedded Human colon using WBSCR27 rabbit polyclonal antibody (STJ118616) at dilution of 1:50 (40x lens).



Immunohistochemistry of paraffin-embedded mouse brain using WBSCR27 rabbit polyclonal antibody (STJ118616) at dilution of 1:50 (40x lens).



Immunohistochemistry of paraffin-embedded Rat testis using WBSCR27 rabbit polyclonal antibody (STJ118616) at dilution of 1:50 (40x lens).

This product is suitable for in-vitro studies under the RESEARCH USE ONLY [RUO] licence. This product must not be used as for diagnostic or other medical purposes.
St John's Laboratory Ltd, Knowledge Dock Business Centre, University Way, London, E16 2RD | Tel: 0208 223 3081