

Anti-ITGA1 antibody (700-800) (STJ118495)

STJ118495

GENERAL INFORMATION

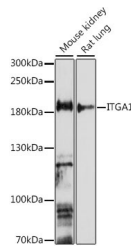
Product Type	Primary antibodies
Short Description	Rabbit polyclonal antibody anti-ITGA1 (700-800) is suitable for use in Western Blot.
Applications	WB
Host/Source	Rabbit
Reactivity	Mouse, Rat

PRODUCT PROPERTIES

Clonality	Polyclonal
Clone ID	
Concentration	
Conjugation	Unconjugated
Purification	Affinity purification
Dilution Range	WB 1:500-1:2000
Formulation	PBS containing 0.02% Sodium Azide, 50% Glycerol, pH7.3.
Isotype	IgG
Storage Instruction	Store in a freezer at -20°C and avoid freeze-thaw cycles.

TARGET INFORMATION

Gene ID	3672
Gene Symbol	ITGA1
Uniprot ID	ITA1_HUMAN
Immunogen	A synthetic peptide corresponding to a sequence within amino acids 700-800 of human ITGA1 (NP_852478.1).
Immunogen Region	700-800
Specificity	
Immunogen Sequence	



Western blot analysis of extracts of various cell lines, using ITGA1 antibody (STJ118495) at 1:1000 dilution. Secondary antibody: HRP Goat Anti-rabbit IgG (H+L) at 1:10000 dilution. Lysates/proteins: 25µg per lane. Blocking buffer: 3% nonfat dry milk in TBST. Detection: ECL Enhanced Kit. Exposure time: 5min.