

Anti-RAPGEF1 antibody (844-1095) (STJ118491)

STJ118491

GENERAL INFORMATION

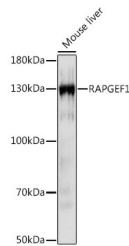
Product Type	Primary antibodies
Short Description	Rabbit polyclonal antibody anti-RAPGEF1 (844-1095) is suitable for use in Western Blot, Immunohistochemistry and Immunofluorescence.
Applications	WB, IHC, IF
Host/Source	Rabbit
Reactivity	Human, Mouse, Rat

PRODUCT PROPERTIES

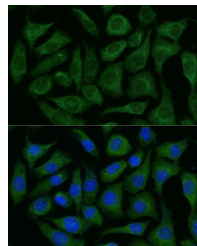
Clonality	Polyclonal
Clone ID	
Concentration	
Conjugation	Unconjugated
Purification	Affinity purification
Dilution Range	WB 1:500-1:2000 IHC 1:50-1:100 IF 1:50-1:100
Formulation	PBS containing 0.02% Sodium Azide, 50% Glycerol, pH7.3.
Isotype	IgG
Storage Instruction	Store in a freezer at -20°C and avoid freeze-thaw cycles.

TARGET INFORMATION

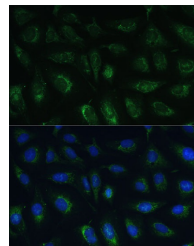
Gene ID	2889
Gene Symbol	RAPGEF1
Uniprot ID	RPGF1_HUMAN
Immunogen	Recombinant fusion protein containing a sequence corresponding to amino acids 844-1095 of human RAPGEF1 (NP_941372.1).
Immunogen Region	844-1095
Specificity	
Immunogen Sequence	



Western blot analysis of extracts of mouse liver, using RAPGEF1 rabbit polyclonal antibody (STJ118491) at 1:1000 dilution. Secondary antibody: HRP Goat Anti-rabbit IgG (H+L) at 1:10000 dilution. Lysates/proteins: 25µg per lane. Blocking buffer: 3% nonfat dry milk in TBST. Detection: ECL Basic Kit. Exposure time: 30s.



Immunofluorescence analysis of L929 cells using RAPGEF1 Polyclonal Antibody (STJ118491) at dilution of 1:100 (40x lens). Blue: DAPI for nuclear staining.



Immunofluorescence analysis of U-2 OS cells using RAPGEF1 Polyclonal Antibody (STJ118491) at dilution of 1:100 (40x lens). Blue: DAPI for nuclear staining.