

Anti-Mono-Methyl-UHRF1-K385 antibody (STJ118448)

STJ118448

GENERAL INFORMATION

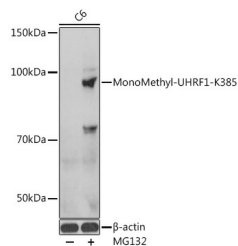
Product Type	Primary antibodies
Short Description	Rabbit polyclonal antibody anti-Mono-Methyl-UHRF1-K385 is suitable for use in Western Blot, Immunohistochemistry and Immunofluorescence.
Applications	WB, IHC, IF
Host/Source	Rabbit
Reactivity	Human, Mouse, Rat

PRODUCT PROPERTIES

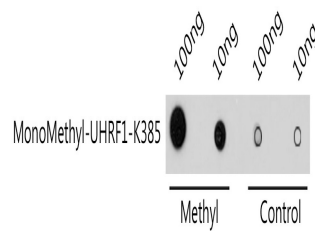
Clonality	Polyclonal
Clone ID	
Concentration	
Conjugation	Unconjugated
Purification	Affinity purification
Dilution Range	DB 1:500-1:2000 WB 1:500-1:2000 IHC 1:50-1:200 IF 1:50-1:200
Formulation	PBS containing 0.02% Sodium Azide, 50% Glycerol, pH7.3.
Isotype	IgG
Storage Instruction	Store in a freezer at -20°C and avoid freeze-thaw cycles.

TARGET INFORMATION

Gene ID	29128
Gene Symbol	UHRF1
Uniprot ID	UHRF1_HUMAN
Immunogen	A synthetic monomethylated peptide around K385 of human UHRF1 (NP_001041666.1).
Region	
Specificity	
Immunogen Sequence	



Western blot analysis of extracts of C6 cells, using MonoMethyl-UHRF1-K385 antibody (STJ118448) at 1:1000 dilution. C6 cells were treated by MG132 (50 μ M) at 37 °C for 90 minutes. Secondary antibody: HRP Goat Anti-rabbit IgG (H+L) at 1:10000 dilution. Lysates/proteins: 25 μ g per lane. Blocking buffer: 3% BSA. Detection: ECL Basic Kit. Exposure time: 1s.



Dot-blot analysis of all sorts of methylation peptides using MonoMethyl-UHRF1-K385 antibody (STJ118448) at 1:1000 dilution.