

Anti-MRPS35 antibody (1-323) (STJ118323)

STJ118323

GENERAL INFORMATION

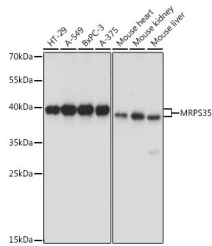
Product Type	Primary antibodies
Short Description	Rabbit polyclonal antibody anti-MRPS35 (1-323) is suitable for use in Western Blot, Immunohistochemistry and Immunofluorescence.
Applications	WB, IHC, IF
Host/Source	Rabbit
Reactivity	Human, Mouse

PRODUCT PROPERTIES

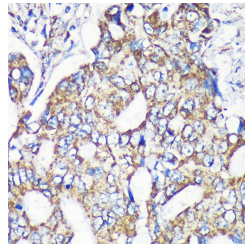
Clonality	Polyclonal
Clone ID	
Concentration	
Conjugation	Unconjugated
Purification	Affinity purification
Dilution Range	WB 1:500-1:2000 IHC 1:50-1:200 IF 1:50-1:200
Formulation	PBS containing 0.02% Sodium Azide, 50% Glycerol, pH7.3.
Isotype	IgG
Storage Instruction	Store in a freezer at -20°C and avoid freeze-thaw cycles.

TARGET INFORMATION

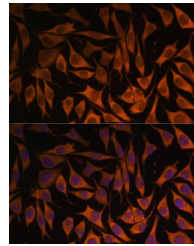
Gene ID	60488
Gene Symbol	MRPS35
Uniprot ID	RT35_HUMAN
Immunogen	Recombinant fusion protein containing a sequence corresponding to amino acids 1-323 of human MRPS35 (NP_068593.2).
Immunogen Region	1-323
Specificity	
Immunogen Sequence	



Western blot analysis of extracts of various cell lines, using MRPS35 antibody (STJ118323) at 1:1000 dilution. Secondary antibody: HRP Goat Anti-rabbit IgG (H+L) at 1:10000 dilution. Lysates/proteins: 25µg per lane. Blocking buffer: 3% nonfat dry milk in TBST. Detection: ECL Basic Kit. Exposure time: 5s.



Immunohistochemistry of paraffin-embedded Human colon carcinoma using MRPS35 rabbit polyclonal antibody (STJ118323) at dilution of 1:100 (40x lens).



Immunofluorescence analysis of L929 cells using MRPS35 antibody (STJ118323) at dilution of 1:100. Blue: DAPI for nuclear staining.