

Anti-ME3 antibody (505-604) (STJ118232)

STJ118232

GENERAL INFORMATION

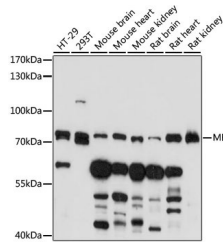
Product Type	Primary antibodies
Short Description	Rabbit polyclonal antibody anti-ME3 (505-604) is suitable for use in Western Blot, Immunohistochemistry and Immunofluorescence.
Applications	WB, IHC, IF
Host/Source	Rabbit
Reactivity	Human, Mouse, Rat

PRODUCT PROPERTIES

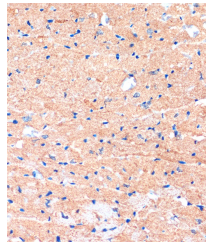
Clonality	Polyclonal
Clone ID	
Concentration	
Conjugation	Unconjugated
Purification	Affinity purification
Dilution Range	WB 1:500-1:2000 IHC 1:50-1:200 IF 1:50-1:200
Formulation	PBS containing 0.02% Sodium Azide, 50% Glycerol, pH7.3.
Isotype	IgG
Storage Instruction	Store in a freezer at -20°C and avoid freeze-thaw cycles.

TARGET INFORMATION

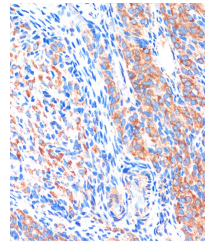
Gene ID	10873
Gene Symbol	ME3
Uniprot ID	MAON_HUMAN
Immunogen	Recombinant fusion protein containing a sequence corresponding to amino acids 505-604 of human ME3 (NP_001014811.1).
Immunogen Region	505-604
Specificity	
Immunogen Sequence	



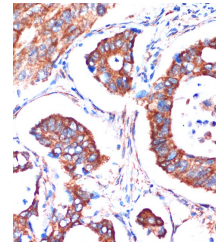
Western blot analysis of extracts of various cell lines, using ME3 antibody (STJ118232) at 1:1000 dilution. Secondary antibody: HRP Goat Anti-rabbit IgG (H+L) at 1:10000 dilution. Lysates/proteins: 25µg per lane. Blocking buffer: 3% nonfat dry milk in TBST. Detection: ECL Basic Kit. Exposure time: 3min.



Immunohistochemistry of paraffin-embedded mouse heart using ME3 rabbit polyclonal antibody (STJ118232) at dilution of 1:100 (40x lens).



Immunohistochemistry of paraffin-embedded Rat ovary using ME3 rabbit polyclonal antibody (STJ118232) at dilution of 1:100 (40x lens).



Immunohistochemistry of paraffin-embedded Human colon carcinoma using ME3 rabbit polyclonal antibody (STJ118232) at dilution of 1:100 (40x lens).