

Anti-RPS6KB1 antibody (361-525) (STJ118165)

STJ118165

GENERAL INFORMATION

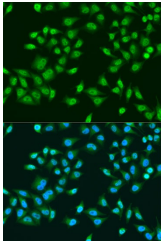
Product Type	Primary antibodies
Short Description	Rabbit polyclonal antibody anti-RPS6KB1 (361-525) is suitable for use in Western Blot, Immunohistochemistry and Immunofluorescence.
Applications	WB, IHC, IF
Host/Source	Rabbit
Reactivity	Human, Rat

PRODUCT PROPERTIES

Clonality	Polyclonal
Clone ID	
Concentration	
Conjugation	Unconjugated
Purification	Affinity purification
Dilution Range	WB 1:500-1:2000 IHC 1:50-1:100 IF 1:50-1:100
Formulation	PBS containing 0.02% Sodium Azide, 50% Glycerol, pH7.3.
Isotype	IgG
Storage Instruction	Store in a freezer at -20°C and avoid freeze-thaw cycles.

TARGET INFORMATION

Gene ID	6198
Gene Symbol	RPS6KB1
Uniprot ID	KS6B1_HUMAN
Immunogen	Recombinant fusion protein containing a sequence corresponding to amino acids 361-525 of human RPS6KB1 (NP_003152.1).
Immunogen Region	361-525
Specificity	
Immunogen Sequence	



Immunofluorescence analysis of U2OS cells using p70 S6 Kinase 1 1 antibody (STJ118165) at dilution of 1:100. Blue: DAPI for nuclear staining.