

Anti-PPP2R5D antibody (450-550) (STJ118153)

STJ118153

GENERAL INFORMATION

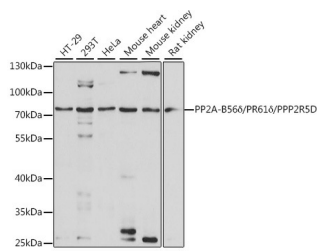
Product Type	Primary antibodies
Short Description	Rabbit polyclonal antibody anti-PPP2R5D (450-550) is suitable for use in Western Blot, Immunohistochemistry and Immunofluorescence.
Applications	WB, IHC, IF
Host/Source	Rabbit
Reactivity	Human, Mouse, Rat

PRODUCT PROPERTIES

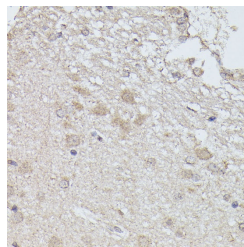
Clonality	Polyclonal
Clone ID	
Concentration	
Conjugation	Unconjugated
Purification	Affinity purification
Dilution Range	WB 1:500-1:2000 IHC 1:100-1:200 IF 1:50-1:200
Formulation	PBS containing 0.02% Sodium Azide, 50% Glycerol, pH7.3.
Isotype	IgG
Storage	Store in a freezer at -20°C and avoid freeze-thaw cycles.
Instruction	

TARGET INFORMATION

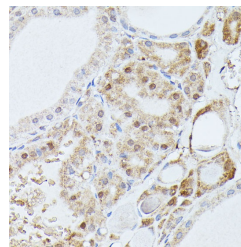
Gene ID	5528
Gene Symbol	PPP2R5D
Uniprot ID	2A5D_HUMAN
Immunogen	A synthetic peptide corresponding to a sequence within amino acids 450-550 of human PP2A-B56 Delta/PR61 Delta/PP2A-B56 Delta/PR61 Delta/PPP2R5D (NP_006236.1).
Immunogen Region	450-550
Specificity	
Immunogen Sequence	



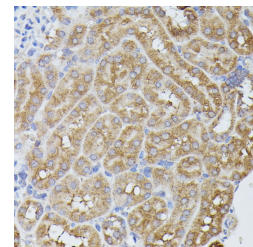
Western blot analysis of extracts of various cell lines, using PP2A-B56 Delta/PR61 Delta/PP2A-B56 Delta/PR61 Delta/PPP2R5D antibody (STJ118153) at 1:1000 dilution. Secondary antibody: HRP Goat Anti-rabbit IgG (H+L) at 1:10000 dilution. Lysates/proteins: 25µg per lane. Blocking buffer: 3% nonfat dry milk in TBST. Detection: ECL Basic Kit. Exposure time: 90s.



Immunohistochemistry of paraffin-embedded rat brain using PP2A-B56 Delta/PR61 Delta/PP2A-B56 Delta/PR61 Delta/PPP2R5D antibody (STJ118153) at dilution of 1:100 (40x lens).



Immunohistochemistry of paraffin-embedded human thyroid cancer using PP2A-B56 Delta/PR61 Delta/PP2A-B56 Delta/PR61 Delta/PPP2R5D antibody (STJ118153) at dilution of 1:100 (40x lens).



Immunohistochemistry of paraffin-embedded mouse kidney using PP2A-B56 Delta/PR61 Delta/PP2A-B56 Delta/PR61 Delta/PPP2R5D antibody (STJ118153) at dilution of 1:100 (40x lens).

This product is suitable for in-vitro studies under the RESEARCH USE ONLY [RUO] licence. This product must not be used as for diagnostic or other medical purposes.

St John's Laboratory Ltd, Knowledge Dock Business Centre, University Way, London, E16 2RD | Tel: 0208 223 3081